



ELECTRONIC COPY

LG728529971
Report verification at igi.org



August 25, 2025
IGI Report Number LG728529971
Description LABORATORY GROWN DIAMOND
Shape and Cutting Style ROUND BRILLIANT
Measurements 9.00 - 9.07 X 5.63 MM
GRADING RESULTS
Carat Weight 2.83 CARATS
Color Grade F
Clarity Grade VS 1
Cut Grade IDEAL

LABORATORY GROWN DIAMOND REPORT

August 25, 2025
IGI Report Number LG728529971
Description LABORATORY GROWN DIAMOND
Shape and Cutting Style ROUND BRILLIANT
Measurements 9.00 - 9.07 X 5.63 MM

GRADING RESULTS

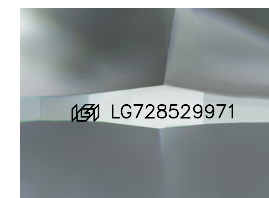
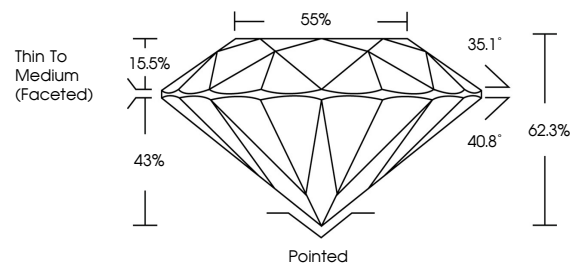
Carat Weight 2.83 CARATS
Color Grade F
Clarity Grade VS 1
Cut Grade IDEAL

ADDITIONAL GRADING INFORMATION

Polish EXCELLENT
Symmetry EXCELLENT
Fluorescence NONE
Inscription(s) LG728529971

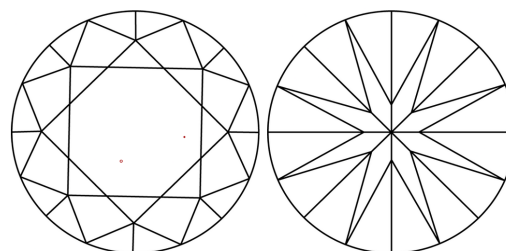
Comments: This Laboratory Grown Diamond was created by Chemical Vapor Deposition (CVD) growth process. Type IIa

PROPORTIONS



Sample Image Used

CLARITY CHARACTERISTICS



KEY TO SYMBOLS

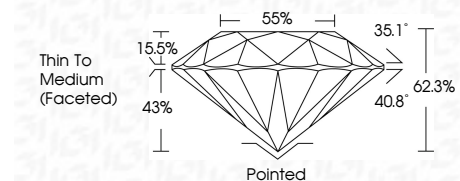
Red symbols indicate internal characteristics.
Green symbols indicate external characteristics.

COLOR

D E F G H I J Faint Very Light Light

CLARITY

IF WS 1-2 VS 1-2 SI 1-2 I 1-3
Internally Flawless Very Very Slightly Included Very Slightly Included Slightly Included Included



ADDITIONAL GRADING INFORMATION

Polish EXCELLENT
Symmetry EXCELLENT
Fluorescence NONE
Inscription(s) LG728529971
Comments: This Laboratory Grown Diamond was created by Chemical Vapor Deposition (CVD) growth process. Type IIa



August 25, 2025
IGI Report No LG728529971
ROUND BRILLIANT
9.00 - 9.07 X 5.63 MM
2.83 CARATS
F
VS 1
IDEAL
62.3%
85%
Thin To Medium (Faceted)
Pointed
EXCELLENT
EXCELLENT
NONE
NONE
IGI LG728529971
Comments: This Laboratory Grown Diamond was created by Chemical Vapor Deposition (CVD) growth process. Type IIa