



ELECTRONIC COPY

LG728531258
Report verification at igi.org



August 30, 2025
IGI Report Number **LG728531258**
Description **LABORATORY GROWN DIAMOND**
Shape and Cutting Style **SQUARE CUSHION MODIFIED BRILLIANT**
Measurements **7.55 X 7.45 X 5.05 MM**
GRADING RESULTS
Carat Weight **2.19 CARATS**
Color Grade **E**
Clarity Grade **VVS 1**

LABORATORY GROWN DIAMOND REPORT

August 30, 2025
IGI Report Number **LG728531258**
Description **LABORATORY GROWN DIAMOND**
Shape and Cutting Style **SQUARE CUSHION MODIFIED BRILLIANT**
Measurements **7.55 X 7.45 X 5.05 MM**

GRADING RESULTS

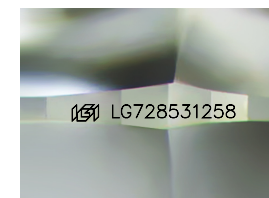
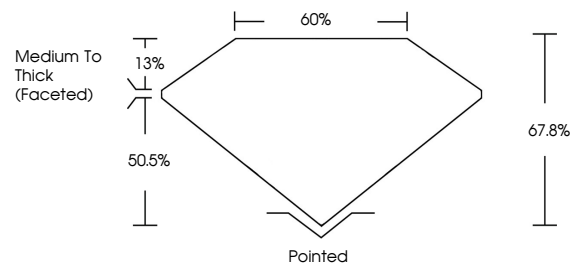
Carat Weight **2.19 CARATS**
Color Grade **E**
Clarity Grade **VVS 1**

ADDITIONAL GRADING INFORMATION

Polish **EXCELLENT**
Symmetry **EXCELLENT**
Fluorescence **NONE**
Inscription(s) **IGI LG728531258**

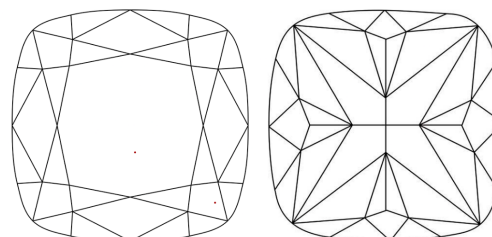
Comments: This Laboratory Grown Diamond was created by Chemical Vapor Deposition (CVD) growth process.
Type IIa

PROPORTIONS



Sample Image Used

CLARITY CHARACTERISTICS



KEY TO SYMBOLS

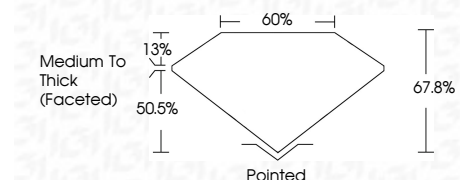
Red symbols indicate internal characteristics.
Green symbols indicate external characteristics.

COLOR

D E F G H I J Faint Very Light Light

CLARITY

| | | | | |
|---------------------|-----------------------------|------------------------|-------------------|------------------|
| IF | VS ¹⁻² | VS ¹⁻² | SI ¹⁻² | I ¹⁻³ |
| Internally Flawless | Very Very Slightly Included | Very Slightly Included | Slightly Included | Included |



ADDITIONAL GRADING INFORMATION

Polish **EXCELLENT**
Symmetry **EXCELLENT**
Fluorescence **NONE**
Inscription(s) **IGI LG728531258**
Comments: This Laboratory Grown Diamond was created by Chemical Vapor Deposition (CVD) growth process.
Type IIa



August 30, 2025
IGI Report No LG728531258
SQUARE CUSHION MODIFIED BRILLIANT
7.55 X 7.45 X 5.05 MM
2.19 CARATS
E
VVS 1
67.8%
50.5%
Medium To Thick (Faceted)
Pointed
EXCELLENT
EXCELLENT
NONE
IGI LG728531258
Comments: This Laboratory Grown Diamond was created by Chemical Vapor Deposition (CVD) growth process.
Type IIa