



ELECTRONIC COPY

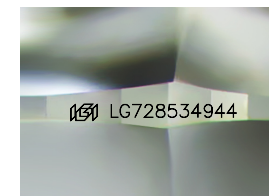
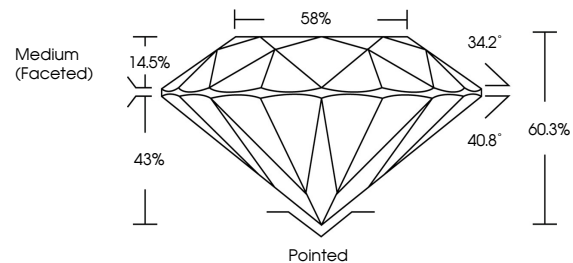
LG728534944
Report verification at igi.org



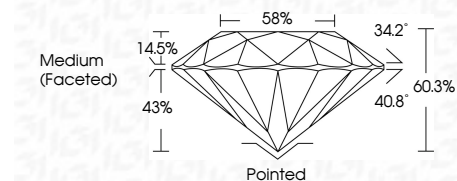
August 13, 2025
IGI Report Number LG728534944
Description LABORATORY GROWN DIAMOND
Shape and Cutting Style ROUND BRILLIANT
Measurements 9.49 - 9.53 X 5.73 MM
GRADING RESULTS
Carat Weight 3.13 CARATS
Color Grade D
Clarity Grade VS 1
Cut Grade IDEAL

August 13, 2025
IGI Report Number LG728534944
Description LABORATORY GROWN DIAMOND
Shape and Cutting Style ROUND BRILLIANT
Measurements 9.49 - 9.53 X 5.73 MM
GRADING RESULTS
Carat Weight 3.13 CARATS
Color Grade D
Clarity Grade VS 1
Cut Grade IDEAL

PROPORTIONS



Sample Image Used



ADDITIONAL GRADING INFORMATION

Polish EXCELLENT
Symmetry EXCELLENT
Fluorescence NONE
Inscription(s) IGI LG728534944

Comments: This Laboratory Grown Diamond was created by Chemical Vapor Deposition (CVD) growth process. Type IIa

ADDITIONAL GRADING INFORMATION

Polish EXCELLENT
Symmetry EXCELLENT
Fluorescence NONE
Inscription(s) IGI LG728534944
Comments: This Laboratory Grown Diamond was created by Chemical Vapor Deposition (CVD) growth process. Type IIa

COLOR

D E F G H I J Faint Very Light Light

CLARITY

IF VS 1-2 VS 1-2 SI 1-2 I 1-3
Internally Flawless Very Very Slightly Included Very Slightly Included Slightly Included Included



Summary of report details including date, report number, description, measurements, grading results, and additional information.