



**LABORATORY GROWN DIAMOND REPORT**

August 23, 2025  
 IGI Report Number **LG728558196**  
 Description **LABORATORY GROWN DIAMOND**  
 Shape and Cutting Style **OVAL BRILLIANT**  
 Measurements **5.77 X 3.84 X 2.34 MM**

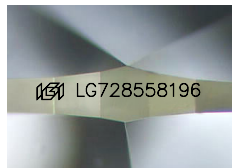
**GRADING RESULTS**

Carat Weight **0.33 CARAT**  
 Color Grade **F**  
 Clarity Grade **VVS 2**  
 Cut Grade **EXCELLENT**

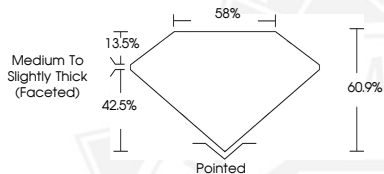
**ADDITIONAL GRADING INFORMATION**

Polish **EXCELLENT**  
 Symmetry **VERY GOOD**  
 Fluorescence **NONE**  
 Inscription(s) **IGI LG728558196**

Comments: As Grown - No indication of post-growth treatment. This Laboratory Grown Diamond was created by High Pressure High Temperature (HPHT) growth process. Type II



Sample Image Used



August 23, 2025  
 IGI Report Number **LG728558196**  
 OVAL BRILLIANT  
 LABORATORY GROWN DIAMOND  
 5.77 X 3.84 X 2.34 MM  
 Carat Weight **0.33 CARAT**  
 Color Grade **F**  
 Clarity Grade **VVS 2**  
 Cut Grade **EXCELLENT**  
 Polish **EXCELLENT**  
 Symmetry **VERY GOOD**  
 Fluorescence **NONE**  
 Inscription(s) **IGI LG728558196**

Comments: As Grown - No indication of post-growth treatment. This Laboratory Grown Diamond was created by High Pressure High Temperature (HPHT) growth process. Type II



August 23, 2025  
 IGI Report Number **LG728558196**  
 OVAL BRILLIANT  
 LABORATORY GROWN DIAMOND  
 5.77 X 3.84 X 2.34 MM  
 Carat Weight **0.33 CARAT**  
 Color Grade **F**  
 Clarity Grade **VVS 2**  
 Cut Grade **EXCELLENT**  
 Polish **EXCELLENT**  
 Symmetry **VERY GOOD**  
 Fluorescence **NONE**  
 Inscription(s) **IGI LG728558196**

Comments: As Grown - No indication of post-growth treatment. This Laboratory Grown Diamond was created by High Pressure High Temperature (HPHT) growth process. Type II

THIS DOCUMENT WAS PRODUCED WITH THE FOLLOWING SECURITY MEASURES: SPECIAL DOCUMENT PAPER, INK SCREENS, WATERMARK, BACKGROUND DESIGNS, HOLOGRAM AND OTHER SECURITY FEATURES NOT LISTED AND DO EXCEED DOCUMENT SECURITY INDUSTRY GUIDELINES.