



**ELECTRONIC COPY**

LG728559231  
Report verification at igi.org



August 20, 2025  
IGI Report Number **LG728559231**  
Description **LABORATORY GROWN DIAMOND**  
Shape and Cutting Style **SQUARE CUSHION MODIFIED BRILLIANT**  
Measurements **6.82 X 6.81 X 4.58 MM**  
**GRADING RESULTS**  
Carat Weight **1.78 CARAT**  
Color Grade **D**  
Clarity Grade **VVS 1**

August 20, 2025  
IGI Report Number **LG728559231**  
Description **LABORATORY GROWN DIAMOND**  
Shape and Cutting Style **SQUARE CUSHION MODIFIED BRILLIANT**  
Measurements **6.82 X 6.81 X 4.58 MM**

**GRADING RESULTS**

Carat Weight **1.78 CARAT**  
Color Grade **D**  
Clarity Grade **VVS 1**

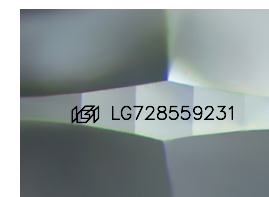
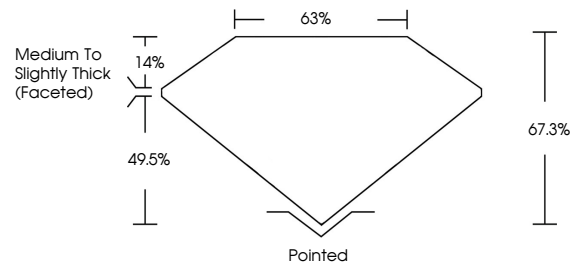
**ADDITIONAL GRADING INFORMATION**

Polish **EXCELLENT**  
Symmetry **EXCELLENT**  
Fluorescence **NONE**

Inscription(s) **IGI LG728559231**

Comments: As Grown - No indication of post-growth treatment.  
This Laboratory Grown Diamond was created by High Pressure High Temperature (HPHT) growth process. Type II

**PROPORTIONS**



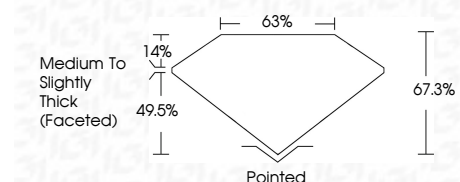
Sample Image Used

**COLOR**

D E F G H I J Faint Very Light Light

**CLARITY**

IF	VS <sup>1-2</sup>	VS <sup>1-2</sup>	SI <sup>1-2</sup>	I <sup>1-3</sup>
Internally Flawless	Very Very Slightly Included	Very Slightly Included	Slightly Included	Included



**ADDITIONAL GRADING INFORMATION**

Polish **EXCELLENT**  
Symmetry **EXCELLENT**  
Fluorescence **NONE**  
Inscription(s) **IGI LG728559231**

Comments: As Grown - No indication of post-growth treatment.  
This Laboratory Grown Diamond was created by High Pressure High Temperature (HPHT) growth process. Type II



**IGI**



August 20, 2025  
IGI Report No LG728559231  
**SQUARE CUSHION MODIFIED BRILLIANT**  
6.82 X 6.81 X 4.58 MM  
1.78 CARAT  
D  
VVS 1  
67.0%  
65%  
Medium to Slightly Thick (Faceted)  
Pointed  
EXCELLENT  
EXCELLENT  
NONE  
IGI LG728559231

Comments: As Grown - No indication of post-growth treatment.  
This Laboratory Grown Diamond was created by High Pressure High Temperature (HPHT) growth process. Type II