



ELECTRONIC COPY

LG728570590
Report verification at igi.org



August 26, 2025
IGI Report Number **LG728570590**

Description **LABORATORY GROWN DIAMOND**

Shape and Cutting Style **CUT CORNERED
RECTANGULAR MODIFIED
BRILLIANT**

Measurements **8.34 X 6.78 X 4.12 MM**

GRADING RESULTS

Carat Weight **2.31 CARATS**

Color Grade **FANCY VIVID BLUE**

Clarity Grade **VS 1**

August 26, 2025
IGI Report Number **LG728570590**
Description **LABORATORY GROWN DIAMOND**
Shape and Cutting Style **CUT CORNERED RECTANGULAR
MODIFIED BRILLIANT**
Measurements **8.34 X 6.78 X 4.12 MM**

GRADING RESULTS

Carat Weight **2.31 CARATS**

Color Grade **FANCY VIVID BLUE**

Clarity Grade **VS 1**

ADDITIONAL GRADING INFORMATION

Polish **EXCELLENT**

Symmetry **EXCELLENT**

Fluorescence **NONE**

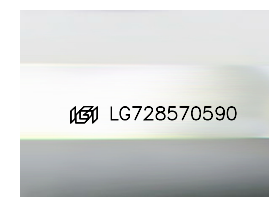
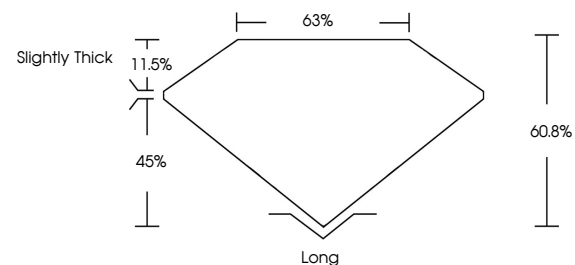
Inscription(s) **IGI LG728570590**

Comments: This Laboratory Grown Diamond was created by Chemical Vapor Deposition (CVD) growth process.

Indications of post-growth treatment.

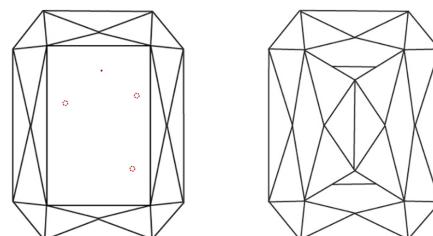
Secondary color: Green

PROPORTIONS



Sample Image Used

CLARITY CHARACTERISTICS



KEY TO SYMBOLS

Red symbols indicate internal characteristics.
Green symbols indicate external characteristics.

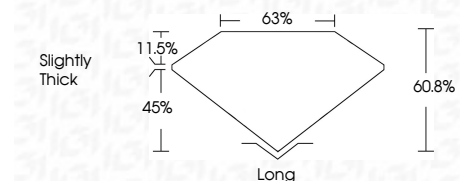
COLOR

D E F G H I J Faint Very Light Light

CLARITY

IF VS¹⁻² VS¹⁻² SI¹⁻² I¹⁻³

Internally Flawless Very Very Slightly Included Very Slightly Included Slightly Included Included



ADDITIONAL GRADING INFORMATION

Polish **EXCELLENT**

Symmetry **EXCELLENT**

Fluorescence **NONE**

Inscription(s) **IGI LG728570590**

Comments: This Laboratory Grown Diamond was created by Chemical Vapor Deposition (CVD) growth process.

Indications of post-growth treatment.

Secondary color: Green



IGI



August 26, 2025
IGI Report No LG728570590
CUT CORNERED RECT. MODIFIED BRILLIANT
8.34 X 6.78 X 4.12 MM
2.31 CARATS
FANCY VIVID BLUE
VS 1
60.8%
63%
Slightly Thick
Long
EXCELLENT
EXCELLENT
NONE
IGI LG728570590
Comments: This Laboratory Grown Diamond was created by Chemical Vapor Deposition (CVD) growth process. Indications of post-growth treatment. Secondary color: Green