



**ELECTRONIC COPY**

LG728573684  
Report verification at [igi.org](http://igi.org)



September 5, 2025  
IGI Report Number **LG728573684**  
Description **LABORATORY GROWN DIAMOND**  
Shape and Cutting Style **CUT CORNERED  
RECTANGULAR MODIFIED  
BRILLIANT**  
Measurements **14.84 X 10.51 X 6.93 MM**  
**GRADING RESULTS**  
Carat Weight **10.00 CARATS**  
Color Grade **F**  
Clarity Grade **SI 1**

September 5, 2025  
IGI Report Number **LG728573684**  
Description **LABORATORY GROWN DIAMOND**  
Shape and Cutting Style **CUT CORNERED RECTANGULAR  
MODIFIED BRILLIANT**  
Measurements **14.84 X 10.51 X 6.93 MM**

**GRADING RESULTS**

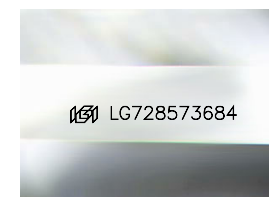
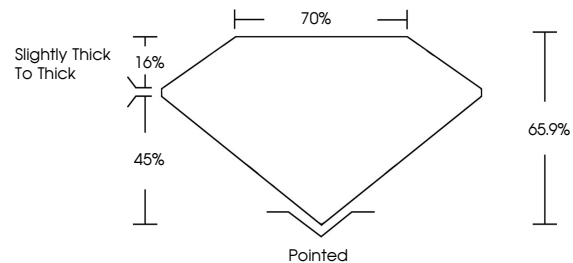
Carat Weight **10.00 CARATS**  
Color Grade **F**  
Clarity Grade **SI 1**

**ADDITIONAL GRADING INFORMATION**

Polish **EXCELLENT**  
Symmetry **VERY GOOD**  
Fluorescence **NONE**  
Inscription(s) **IGI LG728573684**

Comments: This Laboratory Grown Diamond was created by Chemical Vapor Deposition (CVD) growth process.  
Type IIa

**PROPORTIONS**



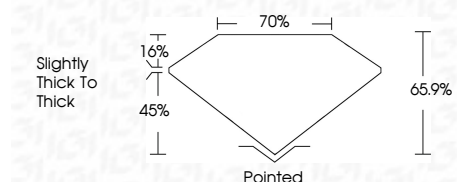
Sample Image Used

**COLOR**

D E F G H I J Faint Very Light Light

**CLARITY**

IF	VS <sup>1-2</sup>	VS <sup>1-2</sup>	SI <sup>1-2</sup>	I <sup>1-3</sup>
Internally Flawless	Very Very Slightly Included	Very Slightly Included	Slightly Included	Included



**ADDITIONAL GRADING INFORMATION**

Polish **EXCELLENT**  
Symmetry **VERY GOOD**  
Fluorescence **NONE**  
Inscription(s) **IGI LG728573684**  
Comments: This Laboratory Grown Diamond was created by Chemical Vapor Deposition (CVD) growth process.  
Type IIa



**IGI**



September 5, 2025  
IGI Report No LG728573684  
CUT CORNERED RECT. MODIFIED BRILLIANT  
14.84 X 10.51 X 6.93 MM  
10.00 CARATS  
F  
SI 1  
65.9%  
70%  
Slightly Thick To Thick  
Pointed  
EXCELLENT  
VERY GOOD  
NONE  
IGI LG728573684  
Comments: This Laboratory Grown Diamond was created by Chemical Vapor Deposition (CVD) growth process.  
Type IIa