



**ELECTRONIC COPY**

LG728573875  
Report verification at igi.org



September 11, 2025

IGI Report Number **LG728573875**

Description **LABORATORY GROWN DIAMOND**

Shape and Cutting Style **EMERALD CUT**

Measurements **13.80 X 9.15 X 5.98 MM**

**GRADING RESULTS**

Carat Weight **7.56 CARATS**

Color Grade **F**

Clarity Grade **VVS 2**

September 11, 2025  
IGI Report Number **LG728573875**  
Description **LABORATORY GROWN DIAMOND**  
Shape and Cutting Style **EMERALD CUT**  
Measurements **13.80 X 9.15 X 5.98 MM**

**GRADING RESULTS**

Carat Weight **7.56 CARATS**

Color Grade **F**

Clarity Grade **VVS 2**

**ADDITIONAL GRADING INFORMATION**

Polish **EXCELLENT**

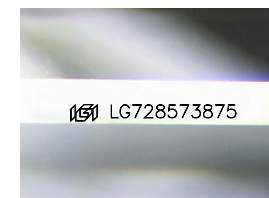
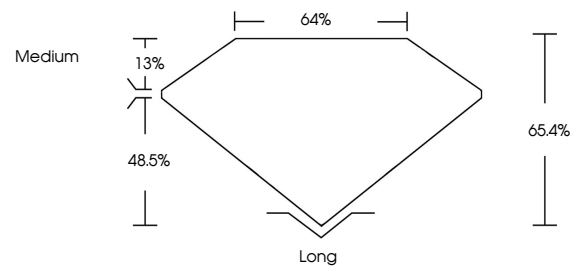
Symmetry **EXCELLENT**

Fluorescence **NONE**

Inscription(s) **IGI LG728573875**

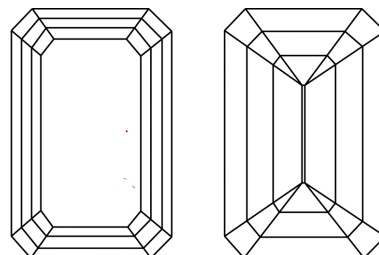
Comments: This Laboratory Grown Diamond was created by Chemical Vapor Deposition (CVD) growth process. Type IIa

**PROPORTIONS**



Sample Image Used

**CLARITY CHARACTERISTICS**



**KEY TO SYMBOLS**

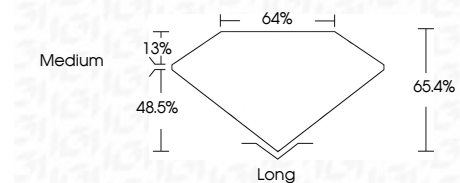
Red symbols indicate internal characteristics.  
Green symbols indicate external characteristics.

**COLOR**

D E F G H I J Faint Very Light Light

**CLARITY**

IF	VS <sup>1-2</sup>	VS <sup>1-2</sup>	SI <sup>1-2</sup>	I <sup>1-3</sup>
Internally Flawless	Very Very Slightly Included	Very Slightly Included	Slightly Included	Included



**ADDITIONAL GRADING INFORMATION**

Polish **EXCELLENT**

Symmetry **EXCELLENT**

Fluorescence **NONE**

Inscription(s) **IGI LG728573875**

Comments: This Laboratory Grown Diamond was created by Chemical Vapor Deposition (CVD) growth process. Type IIa



**IGI**

September 11, 2025  
IGI Report No. LG728573875  
**EMERALD CUT**  
13.80 X 9.15 X 5.98 MM  
7.56 CARATS  
F  
VVS 2  
65.4%  
64%  
Medium  
Long  
EXCELLENT  
EXCELLENT  
NONE  
IGI LG728573875  
Comments: This Laboratory Grown Diamond was created by Chemical Vapor Deposition (CVD) growth process. Type IIa