



**ELECTRONIC COPY**

## LABORATORY GROWN DIAMOND REPORT

August 20, 2025	
IGI Report Number	LG728578730
Description	LABORATORY GROWN DIAMOND
Shape and Cutting Style	PRINCESS CUT
Measurements	5.57 X 5.51 X 3.88 MM

## GRADING RESULTS

Carat Weight	1.06 CARAT
Color Grade	E
Clarity Grade	SI 1

### ADDITIONAL GRADING INFORMATION

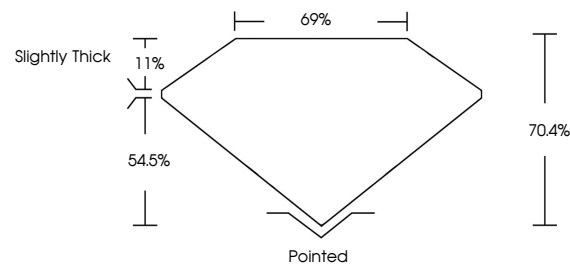
Polish	EXCELLENT
Symmetry	EXCELLENT
Fluorescence	NONE

Inscription(s)  LG728578730

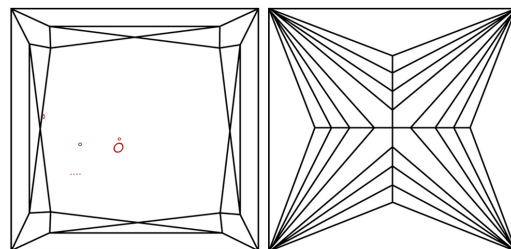
Comments: This Laboratory Grown Diamond was created by Chemical Vapor Deposition (CVD) growth process.  
Type IIa

LG728578730  
Report verification at [igi.org](https://igi.org)

## PROPORTIONS

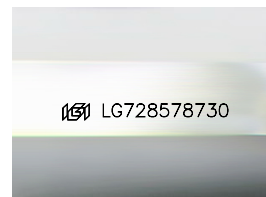


## CLARITY CHARACTERISTICS



## KEY TO SYMBOLS

Red symbols indicate internal characteristics.  
Green symbols indicate external characteristics.



Sample Image Used

**COLOR**

D E F G H I J Faint Very Light Light

## CLARITY

IF                      VS<sup>1-2</sup>                      VS<sup>1-2</sup>                      S<sup>1-2</sup>                      |<sup>1-3</sup>

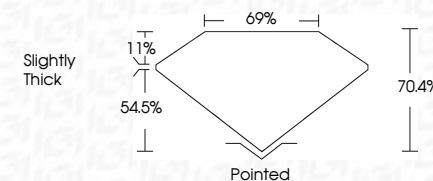
Internally Flawless	Very Very Slightly Included	Very Slightly Included	Slightly Included	Included
------------------------	--------------------------------	---------------------------	----------------------	----------



August 20, 2025	
IGI Report Number	LG728578730
Description	LABORATORY GROWN DIAMOND
Shape and Cutting Style	PRINCESS CUT
Measurements	5.57 X 5.51 X 3.88 MM

## GRADING RESULTS

Carat Weight	1.06 CARAT
Color Grade	E
Clarity Grade	SI 1



### ADDITIONAL GRADING INFORMATION

Polish	EXCELLENT
Symmetry	EXCELLENT
Fluorescence	NONE
Inscription(s)	<del>(16)</del> LG728578730

Comments: This Laboratory Grown Diamond was created by Chemical Vapor Deposition (CVD) growth process.  
Type IIa



IG



© IGI 2020, International Gemological Institute

FD - 10 20

**www.igi.org**

THIS DOCUMENT WAS PRODUCED WITH THE FOLLOWING SECURITY MEASURES: SPECIAL DOCUMENT PAPER, INK SCREENS, WATERMARK, BACKGROUND DESIGNS, HOLOGRAM AND OTHER SECURITY FEATURES NOT LISTED AND DO EXCEED DOCUMENT SECURITY INDUSTRY GUIDELINES

August 20, 2025  
IGI Report No LG728578730

IGL Report No. 167265727930	PRINCESS CUT		Carat Weight	1.06 CARAT
	5.67 X 5.61 X 3.88 MM		Color Grade	E
	Clarity Grade	SI 1		
	Depth	70.4%		
	Table	69%		
	Grade	Slightly Thick		
	Culet	Pointed		
	Polish	EXCELLENT		
	Symmetry	EXCELLENT		
	Fluorescence	NONE		
	681127265727930			

**Comments:**  
This Laboratory Grown Diamond was created by Chemical Vapor Deposition (CVD) growth process.