



ELECTRONIC COPY

LABORATORY GROWN DIAMOND REPORT

August 21, 2025	
IGI Report Number	LG729509320
Description	LABORATORY GROWN DIAMOND
Shape and Cutting Style	PRINCESS CUT
Measurements	8.43 X 8.39 X 5.95 MM

GRADING RESULTS

Carat Weight	3.59 CARATS
Color Grade	E
Clarity Grade	VVS 2

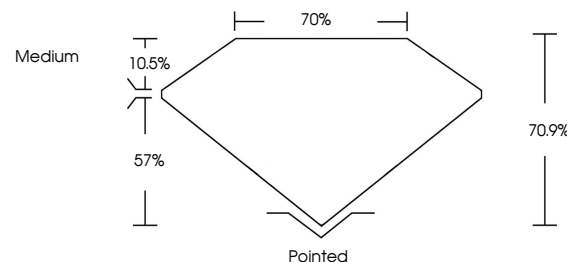
ADDITIONAL GRADING INFORMATION

Polish	EXCELLENT
Symmetry	EXCELLENT
Fluorescence	NONE
Inscription(s)	15 LG729509320

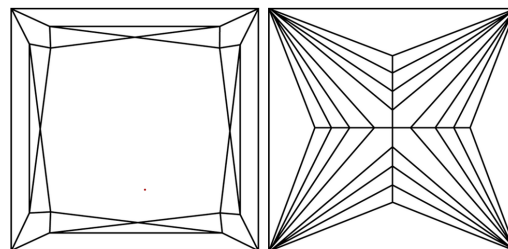
Comments: This Laboratory Grown Diamond was created by Chemical Vapor Deposition (CVD) growth process.
Type IIa

LG729509320
Report verification at lgi.org

PROPORTIONS

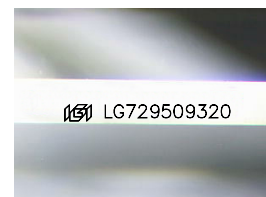


CLARITY CHARACTERISTICS



KEY TO SYMBOLS

Red symbols indicate internal characteristics.
Green symbols indicate external characteristics.



Sample Image Used

COLOR

D E F G H I J Faint Very Light Light

CLARITY

IF	VS ¹⁻²	VS ¹⁻²	SI ¹⁻²	I ¹⁻³
Internally Flawless	Very Very Slightly Included	Very Slightly Included	Slightly Included	Included

LABORATORY GROWN DIAMOND REPORT



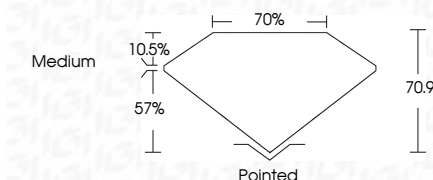
August 21, 2025	
IGI Report Number	LG729509320
Description	LABORATORY GROWN DIAMOND
Shape and Cutting Style	PRINCESS CUT
Measurements	8.43 X 8.39 X 5.95 MM

GRADING RESULTS

Carat Weight	3.59 CARATS
Color Grade	E
Clarity Grade	VVS 2

ADDITIONAL GRADING INFORMATION

Polish	EXCELLENT
Symmetry	EXCELLENT
Fluorescence	NONE
Inscription(s)	163 LG729509320
Comments: This Laboratory Grown Diamond was created by Chemical Vapor Deposition (CVD) growth process.	
Type IIa	



© IGI 2020, International Gemological Institute

FD - 10 20



THIS DOCUMENT WAS PRODUCED WITH THE FOLLOWING SECURITY MEASURES: SPECIAL DOCUMENT PAPER, INK SCREENS, WATERMARK, BACKGROUND DESIGNS, HOLOGRAM AND OTHER SECURITY FEATURES NOT LISTED AND DO EXCEED DOCUMENT SECURITY INDUSTRY GUIDELINE

www.igi.org



August 21, 2025
GI Report No LG729509320

PRINCESS CUT	4.43 X 8.99 X 5.95 MM	3.59 CARATS	
	Carat Weight		
	Color Grade	E	
	Clarity Grade	VVS 2	
	Depth	70.9%	
	Table	70%	
	Girdle	Medium	
	Culet	Pointed	
	Polish	EXCELLENT	
	Symmetry	EXCELLENT	
	Fluorescence	NONE	

Comments:
This Laboratory Grown Diamond was
created by Chemical Vapor Deposition
(CVD) growth process.