



ELECTRONIC COPY

LG729517915
Report verification at igi.org



August 22, 2025

IGI Report Number **LG729517915**

Description **LABORATORY GROWN DIAMOND**

Shape and Cutting Style **ROUND BRILLIANT**

Measurements **9.78 - 9.81 X 5.92 MM**

GRADING RESULTS

Carat Weight **3.53 CARATS**

Color Grade **G**

Clarity Grade **VS 1**

Cut Grade **IDEAL**

August 22, 2025

IGI Report Number **LG729517915**

Description **LABORATORY GROWN DIAMOND**

Shape and Cutting Style **ROUND BRILLIANT**

Measurements **9.78 - 9.81 X 5.92 MM**

GRADING RESULTS

Carat Weight **3.53 CARATS**

Color Grade **G**

Clarity Grade **VS 1**

Cut Grade **IDEAL**

ADDITIONAL GRADING INFORMATION

Polish **EXCELLENT**

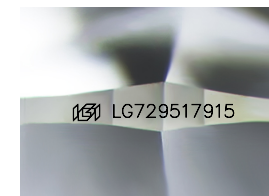
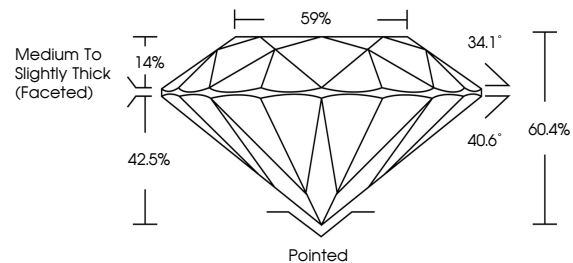
Symmetry **EXCELLENT**

Fluorescence **NONE**

Inscription(s) **LG729517915**

Comments: This Laboratory Grown Diamond was created by Chemical Vapor Deposition (CVD) growth process. Type IIa

PROPORTIONS



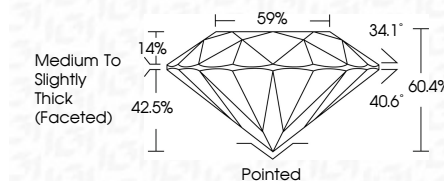
Sample Image Used

COLOR

D E F G H I J Faint Very Light Light

CLARITY

IF	WS ¹⁻²	VS ¹⁻²	SI ¹⁻²	I ¹⁻³
Internally Flawless	Very Very Slightly Included	Very Slightly Included	Slightly Included	Included



ADDITIONAL GRADING INFORMATION

Polish **EXCELLENT**

Symmetry **EXCELLENT**

Fluorescence **NONE**

Inscription(s) **LG729517915**

Comments: This Laboratory Grown Diamond was created by Chemical Vapor Deposition (CVD) growth process. Type IIa



IGI



August 22, 2025
IGI Report No LG729517915
ROUND BRILLIANT

9.78 - 9.81 X 5.92 MM

3.53 CARATS
Color Grade G
Clarity Grade VS 1
Depth IDEAL
Table 60.4%
Girdle 42.5%
Crown Angle 34.1°
Pavilion Angle 40.6°
Medium To Slightly Thick (Faceted)

Pointed
Polish EXCELLENT
Symmetry EXCELLENT
Fluorescence NONE
Inscriptions(s) IGI LG729517915

Comments: This Laboratory Grown Diamond was created by Chemical Vapor Deposition (CVD) growth process. Type IIa