



**ELECTRONIC COPY**

LG729523537  
Report verification at igi.org



August 21, 2025

IGI Report Number **LG729523537**

Description **LABORATORY GROWN DIAMOND**

Shape and Cutting Style **ROUND BRILLIANT**

Measurements **9.77 - 9.83 X 5.96 MM**

**GRADING RESULTS**

Carat Weight **3.53 CARATS**

Color Grade **E**

Clarity Grade **VS 1**

Cut Grade **IDEAL**

August 21, 2025

IGI Report Number **LG729523537**

Description **LABORATORY GROWN DIAMOND**

Shape and Cutting Style **ROUND BRILLIANT**

Measurements **9.77 - 9.83 X 5.96 MM**

**GRADING RESULTS**

Carat Weight **3.53 CARATS**

Color Grade **E**

Clarity Grade **VS 1**

Cut Grade **IDEAL**

**ADDITIONAL GRADING INFORMATION**

Polish **EXCELLENT**

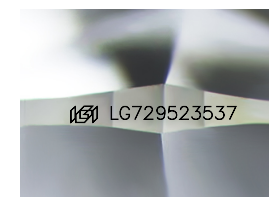
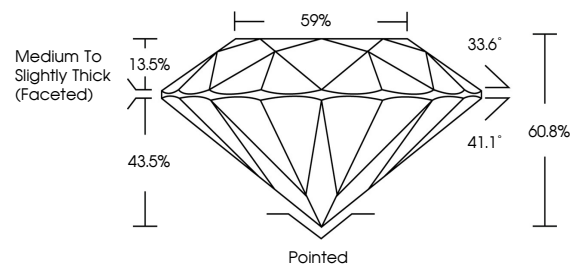
Symmetry **EXCELLENT**

Fluorescence **NONE**

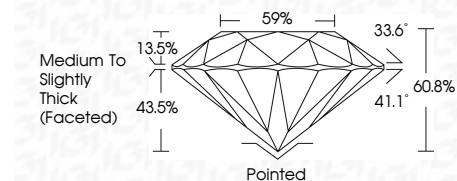
Inscription(s) **IGI LG729523537**

Comments: This Laboratory Grown Diamond was created by Chemical Vapor Deposition (CVD) growth process. Type IIa

**PROPORTIONS**



Sample Image Used



**COLOR**

D E F G H I J Faint Very Light Light

**CLARITY**

IF	VS <sup>1-2</sup>	VS <sup>1-2</sup>	SI <sup>1-2</sup>	I <sup>1-3</sup>
Internally Flawless	Very Very Slightly Included	Very Slightly Included	Slightly Included	Included

**ADDITIONAL GRADING INFORMATION**

Polish **EXCELLENT**

Symmetry **EXCELLENT**

Fluorescence **NONE**

Inscription(s) **IGI LG729523537**

Comments: This Laboratory Grown Diamond was created by Chemical Vapor Deposition (CVD) growth process. Type IIa



**IGI**

August 21, 2025  
IGI Report No LG729523537  
ROUND BRILLIANT

9.77 - 9.83 X 5.96 MM  
3.53 CARATS  
E  
VS 1  
IDEAL  
60.8%  
59%  
Medium To Slightly Thick (Faceted)

Pointed  
EXCELLENT  
EXCELLENT  
NONE  
IGI LG729523537

Comments: This Laboratory Grown Diamond was created by Chemical Vapor Deposition (CVD) growth process. Type IIa