



ELECTRONIC COPY

LG729531247
Report verification at igi.org



September 13, 2025

IGI Report Number **LG729531247**

Description **LABORATORY GROWN DIAMOND**

Shape and Cutting Style **EMERALD CUT**

Measurements **10.07 X 6.76 X 4.40 MM**

GRADING RESULTS

Carat Weight **3.03 CARATS**

Color Grade **FANCY INTENSE PINK**

Clarity Grade **VS 1**

September 13, 2025
IGI Report Number **LG729531247**
Description **LABORATORY GROWN DIAMOND**
Shape and Cutting Style **EMERALD CUT**
Measurements **10.07 X 6.76 X 4.40 MM**

GRADING RESULTS

Carat Weight **3.03 CARATS**

Color Grade **FANCY INTENSE PINK**

Clarity Grade **VS 1**

ADDITIONAL GRADING INFORMATION

Polish **EXCELLENT**

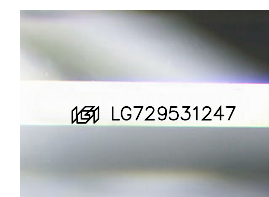
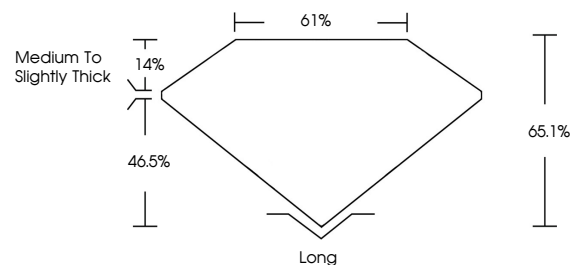
Symmetry **EXCELLENT**

Fluorescence **STRONG**

Inscription(s) **LG729531247**

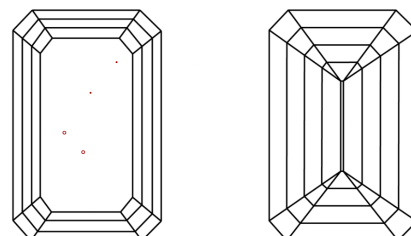
Comments: This Laboratory Grown Diamond was created by Chemical Vapor Deposition (CVD) growth process. Indications of post-growth treatment.

PROPORTIONS



Sample Image Used

CLARITY CHARACTERISTICS



KEY TO SYMBOLS

Red symbols indicate internal characteristics.
Green symbols indicate external characteristics.

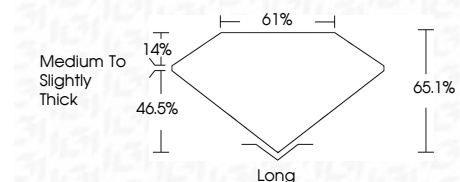
COLOR

D E F G H I J Faint Very Light Light

CLARITY

IF VS¹⁻² VS¹⁻² SI¹⁻² I¹⁻³

Internally Flawless Very Very Slightly Included Very Slightly Included Slightly Included Included



ADDITIONAL GRADING INFORMATION

Polish **EXCELLENT**

Symmetry **EXCELLENT**

Fluorescence **STRONG**

Inscription(s) **LG729531247**

Comments: This Laboratory Grown Diamond was created by Chemical Vapor Deposition (CVD) growth process. Indications of post-growth treatment.



IGI



September 13, 2025
IGI Report No. LG729531247
EMERALD CUT

3.03 CARATS
Carat Weight
FANCY INTENSE PINK
Color Grade

VS 1
Clarity Grade

10.07 X 6.76 X 4.40 MM
Depth
65.1%
Table
61%
Girdle
Medium to Slightly Thick

Long
Culet
EXCELLENT
Polish
EXCELLENT
Symmetry
STRONG
Fluorescence
IGI LG729531247
Inscription(s)

Comments: This Laboratory Grown Diamond was created by Chemical Vapor Deposition (CVD) growth process. Indications of post-growth treatment.