



INTERNATIONAL GEMOLOGICAL INSTITUTE

ELECTRONIC COPY

LABORATORY GROWN DIAMOND REPORT

August 29, 2025
IGI Report Number **LG729533363**
Description **LABORATORY GROWN DIAMOND**
Shape and Cutting Style **PEAR BRILLIANT**
Measurements **6.49 X 4.00 X 2.31 MM**

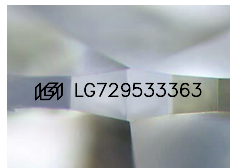
GRADING RESULTS

Carat Weight **0.35 CARAT**
Color Grade **E**
Clarity Grade **VS 1**

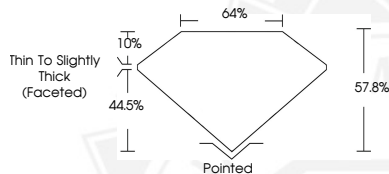
ADDITIONAL GRADING INFORMATION

Polish **GOOD**
Symmetry **GOOD**
Fluorescence **NONE**
Inscription(s) **IGI LG729533363**

Comments: As Grown - No indication of post-growth treatment. This Laboratory Grown Diamond was created by High Pressure High Temperature (HPHT) growth process. Type II



Sample Image Used



August 29, 2025
IGI Report Number **LG729533363**
PEAR BRILLIANT
LABORATORY GROWN DIAMOND
6.49 X 4.00 X 2.31 MM
Carat Weight **0.35 CARAT**
Color Grade **E**
Clarity Grade **VS 1**
Polish **GOOD**
Symmetry **GOOD**
Fluorescence **NONE**
Inscription(s) **IGI LG729533363**

Comments: As Grown - No indication of post-growth treatment. This Laboratory Grown Diamond was created by High Pressure High Temperature (HPHT) growth process. Type II



August 29, 2025
IGI Report Number **LG729533363**
PEAR BRILLIANT
LABORATORY GROWN DIAMOND
6.49 X 4.00 X 2.31 MM
Carat Weight **0.35 CARAT**
Color Grade **E**
Clarity Grade **VS 1**
Polish **GOOD**
Symmetry **GOOD**
Fluorescence **NONE**
Inscription(s) **IGI LG729533363**

Comments: As Grown - No indication of post-growth treatment. This Laboratory Grown Diamond was created by High Pressure High Temperature (HPHT) growth process. Type II



THIS DOCUMENT WAS PRODUCED WITH THE FOLLOWING SECURITY MEASURES: SPECIAL DOCUMENT PAPER, INK SCREENS, WATERMARK, BACKGROUND DESIGNS, HOLOGRAM AND OTHER SECURITY FEATURES NOT LISTED AND DO EXCEED DOCUMENT SECURITY INDUSTRY GUIDELINES.

For terms & conditions and to verify this report, please visit www.igi.org