



ELECTRONIC COPY

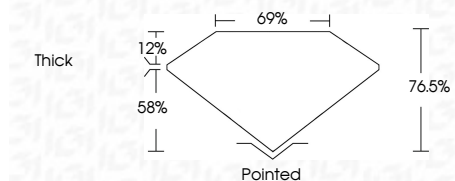
LG729543342
Report verification at igi.org



September 5, 2025
IGI Report Number **LG729543342**
Description **LABORATORY GROWN DIAMOND**
Shape and Cutting Style **MODIFIED PRINCESS CUT**
Measurements **5.31 X 5.27 X 4.03 MM**

GRADING RESULTS

Carat Weight **1.02 CARAT**
Color Grade **E**
Clarity Grade **VS 2**



ADDITIONAL GRADING INFORMATION

Polish **EXCELLENT**
Symmetry **VERY GOOD**
Fluorescence **NONE**
Inscription(s) **IGI LG729543342
100 FACETS**

Comments: This Laboratory Grown Diamond was created by Chemical Vapor Deposition (CVD) growth process. Type IIa



September 5, 2025
IGI Report No LG729543342
MODIFIED PRINCESS CUT
5.31 X 5.27 X 4.03 MM
1.02 CARAT
E
VS 2
76.5%
69%
Thick
Pointed
EXCELLENT
VERY GOOD
NONE
IGI LG729543342 100 FACETS
Comments: This Laboratory Grown Diamond was created by Chemical Vapor Deposition (CVD) growth process. Type IIa

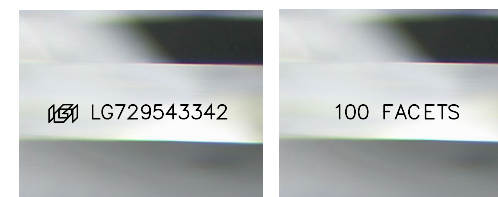
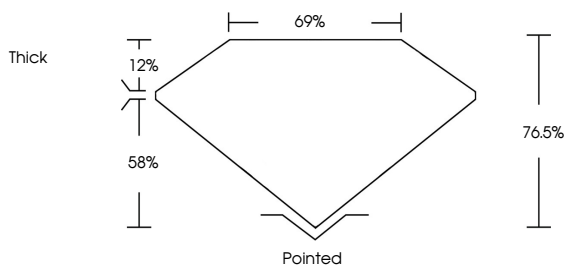
September 5, 2025
IGI Report Number **LG729543342**
Description **LABORATORY GROWN DIAMOND**
Shape and Cutting Style **MODIFIED PRINCESS CUT**
Measurements **5.31 X 5.27 X 4.03 MM**
GRADING RESULTS
Carat Weight **1.02 CARAT**
Color Grade **E**
Clarity Grade **VS 2**

ADDITIONAL GRADING INFORMATION

Polish **EXCELLENT**
Symmetry **VERY GOOD**
Fluorescence **NONE**
Inscription(s) **IGI LG729543342
100 FACETS**

Comments: This Laboratory Grown Diamond was created by Chemical Vapor Deposition (CVD) growth process. Type IIa

PROPORTIONS



Sample Images Used

COLOR

D E F G H I J Faint Very Light Light

CLARITY

IF	VS ¹⁻²	VS ¹⁻²	SI ¹⁻²	I ¹⁻³
Internally Flawless	Very Very Slightly Included	Very Slightly Included	Slightly Included	Included

