



ELECTRONIC COPY

LABORATORY GROWN DIAMOND REPORT

August 22, 2025
IGI Report Number LG729548245
Description LABORATORY GROWN DIAMOND
Shape and Cutting Style CUT CORNERED RECTANGULAR MODIFIED BRILLIANT
Measurements 9.34 X 6.53 X 4.35 MM

GRADING RESULTS

Carat Weight 2.28 CARATS
Color Grade F
Clarity Grade VVS 2

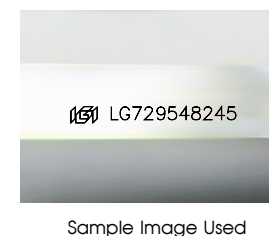
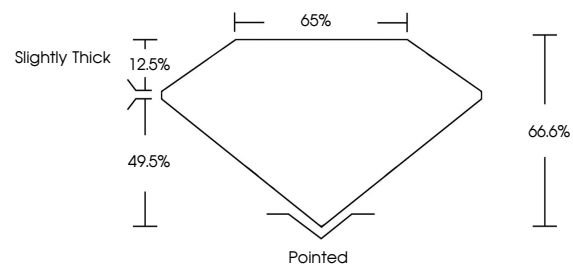
ADDITIONAL GRADING INFORMATION

Polish EXCELLENT
Symmetry EXCELLENT
Fluorescence NONE

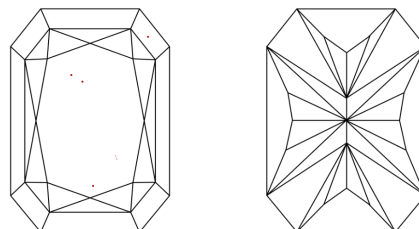
Inscription(s) LG729548245

Comments: This Laboratory Grown Diamond was created by Chemical Vapor Deposition (CVD) growth process.
Type IIa

PROPORTIONS



CLARITY CHARACTERISTICS



KEY TO SYMBOLS

Red symbols indicate internal characteristics.
Green symbols indicate external characteristics.

COLOR

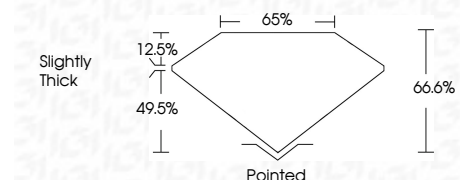
D E F G H I J Faint Very Light Light

CLARITY

IF VS¹⁻² VS¹⁻² SI¹⁻² I¹⁻³
Internally Flawless Very Very Slightly Included Very Slightly Included Slightly Included Included



August 22, 2025
IGI Report Number LG729548245
Description LABORATORY GROWN DIAMOND
Shape and Cutting Style CUT CORNERED RECTANGULAR MODIFIED BRILLIANT
Measurements 9.34 X 6.53 X 4.35 MM
GRADING RESULTS
Carat Weight 2.28 CARATS
Color Grade F
Clarity Grade VVS 2



ADDITIONAL GRADING INFORMATION

Polish EXCELLENT
Symmetry EXCELLENT
Fluorescence NONE
Inscription(s) LG729548245
Comments: This Laboratory Grown Diamond was created by Chemical Vapor Deposition (CVD) growth process.
Type IIa



August 22, 2025
IGI Report No LG729548245
CUT CORNERED RECT. MODIFIED BRILLIANT
9.34 X 6.53 X 4.35 MM
2.28 CARATS
F
VVS 2
66.6%
65%
Slightly Thick
Pointed
EXCELLENT
EXCELLENT
NONE
Inscription(s) LG729548245
Comments: This Laboratory Grown Diamond was created by Chemical Vapor Deposition (CVD) growth process.
Type IIa