



**ELECTRONIC COPY**

LG729554355  
Report verification at igi.org



August 27, 2025  
IGI Report Number **LG729554355**  
Description **LABORATORY GROWN DIAMOND**  
Shape and Cutting Style **PRINCESS CUT**  
Measurements **13.33 X 13.01 X 9.21 MM**  
**GRADING RESULTS**  
Carat Weight **15.12 CARATS**  
Color Grade **G**  
Clarity Grade **VS 1**

**LABORATORY GROWN DIAMOND REPORT**

August 27, 2025  
IGI Report Number **LG729554355**  
Description **LABORATORY GROWN DIAMOND**  
Shape and Cutting Style **PRINCESS CUT**  
Measurements **13.33 X 13.01 X 9.21 MM**

**GRADING RESULTS**

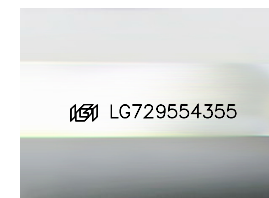
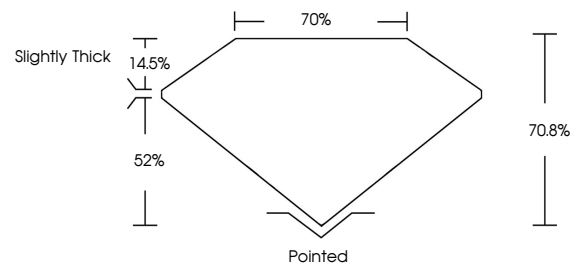
Carat Weight **15.12 CARATS**  
Color Grade **G**  
Clarity Grade **VS 1**

**ADDITIONAL GRADING INFORMATION**

Polish **EXCELLENT**  
Symmetry **EXCELLENT**  
Fluorescence **NONE**  
Inscription(s) **IGI LG729554355**

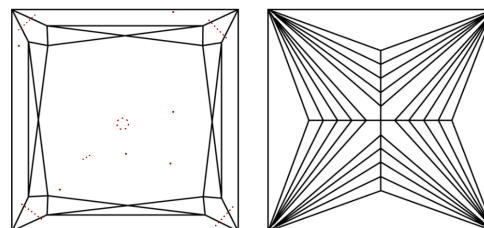
Comments: This Laboratory Grown Diamond was created by Chemical Vapor Deposition (CVD) growth process. Type IIa

**PROPORTIONS**



Sample Image Used

**CLARITY CHARACTERISTICS**



**KEY TO SYMBOLS**

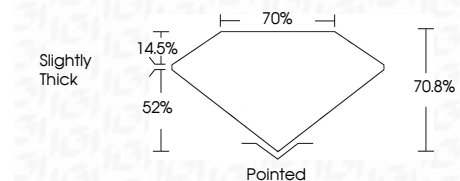
Red symbols indicate internal characteristics.  
Green symbols indicate external characteristics.

**COLOR**

D E F G H I J Faint Very Light Light

**CLARITY**

IF	VS <sup>1-2</sup>	VS <sup>1-2</sup>	SI <sup>1-2</sup>	I <sup>1-3</sup>
Internally Flawless	Very Very Slightly Included	Very Slightly Included	Slightly Included	Included



**ADDITIONAL GRADING INFORMATION**

Polish **EXCELLENT**  
Symmetry **EXCELLENT**  
Fluorescence **NONE**  
Inscription(s) **IGI LG729554355**  
Comments: This Laboratory Grown Diamond was created by Chemical Vapor Deposition (CVD) growth process. Type IIa



**IGI**



August 27, 2025  
IGI Report No LG729554355  
**PRINCESS CUT**  
13.33 X 13.01 X 9.21 MM  
15.12 CARATS  
Color Grade **G**  
Clarity Grade **VS 1**  
Table **70.8%**  
Depth **70%**  
Girdle **Slightly Thick**  
Culet **Pointed**  
Polish **EXCELLENT**  
Symmetry **EXCELLENT**  
Fluorescence **NONE**  
Inscription(s) **IGI LG729554355**  
Comments: This Laboratory Grown Diamond was created by Chemical Vapor Deposition (CVD) growth process. Type IIa