



**ELECTRONIC COPY**

LG729555687  
Report verification at igi.org



August 29, 2025

IGI Report Number **LG729555687**

Description **LABORATORY GROWN DIAMOND**

Shape and Cutting Style **PRINCESS CUT**

Measurements **9.67 X 9.27 X 6.73 MM**

**GRADING RESULTS**

Carat Weight **5.50 CARATS**

Color Grade **G**

Clarity Grade **VS 1**

**LABORATORY GROWN DIAMOND REPORT**

August 29, 2025

IGI Report Number **LG729555687**

Description **LABORATORY GROWN DIAMOND**

Shape and Cutting Style **PRINCESS CUT**

Measurements **9.67 X 9.27 X 6.73 MM**

**GRADING RESULTS**

Carat Weight **5.50 CARATS**

Color Grade **G**

Clarity Grade **VS 1**

**ADDITIONAL GRADING INFORMATION**

Polish **EXCELLENT**

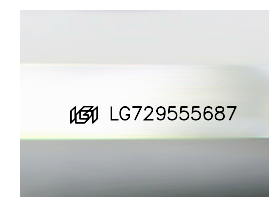
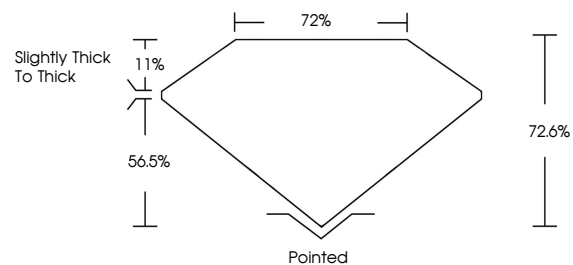
Symmetry **EXCELLENT**

Fluorescence **NONE**

Inscription(s) **IGI LG729555687**

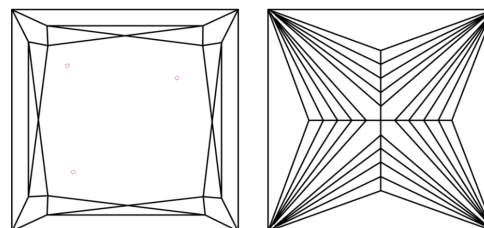
Comments: This Laboratory Grown Diamond was created by Chemical Vapor Deposition (CVD) growth process. Type IIa

**PROPORTIONS**



Sample Image Used

**CLARITY CHARACTERISTICS**



**KEY TO SYMBOLS**

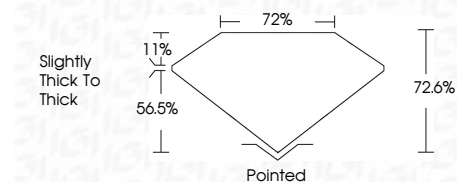
Red symbols indicate internal characteristics.  
Green symbols indicate external characteristics.

**COLOR**

D E F G H I J Faint Very Light Light

**CLARITY**

IF	VS <sup>1-2</sup>	VS <sup>1-2</sup>	SI <sup>1-2</sup>	I <sup>1-3</sup>
Internally Flawless	Very Very Slightly Included	Very Slightly Included	Slightly Included	Included



**ADDITIONAL GRADING INFORMATION**

Polish **EXCELLENT**

Symmetry **EXCELLENT**

Fluorescence **NONE**

Inscription(s) **IGI LG729555687**

Comments: This Laboratory Grown Diamond was created by Chemical Vapor Deposition (CVD) growth process. Type IIa



**IGI**



August 29, 2025  
IGI Report No LG729555687  
PRINCESS CUT

5.50 CARATS  
G

9.67 X 9.27 X 6.73 MM  
Color Grade  
Clarity Grade  
Table  
Depth  
Girdle

VS 1  
72.6%  
72%  
Slightly Thick To Thick

Pointed  
EXCELLENT  
EXCELLENT  
NONE  
IGI LG729555687

Comments: This Laboratory Grown Diamond was created by Chemical Vapor Deposition (CVD) growth process. Type IIa