



# INTERNATIONAL GEMOLOGICAL INSTITUTE

ELECTRONIC COPY

## LABORATORY GROWN DIAMOND REPORT

August 23, 2025

IGI Report Number

LG729563673

Description

LABORATORY GROWN DIAMOND

Shape and Cutting Style

ROUND BRILLIANT

Measurements

3.73 - 3.75 X 2.25 MM

### GRADING RESULTS

Carat Weight

0.20 CARAT

Color Grade

E

Clarity Grade

SI 1

Cut Grade

VERY GOOD

### ADDITIONAL GRADING INFORMATION

Polish

EXCELLENT

Symmetry

VERY GOOD

Fluorescence

NONE

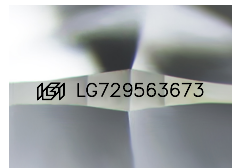
Inscription(s)

IGI LG729563673

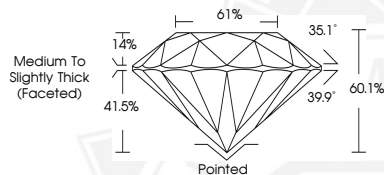
Comments: As Grown - No indication of post-growth treatment.

This Laboratory Grown Diamond was created by High Pressure High Temperature (HPHT) growth process.

Type II



Sample Image Used



August 23, 2025

IGI Report Number LG729563673

ROUND BRILLIANT

LABORATORY GROWN DIAMOND

3.73 - 3.75 X 2.25 MM

Carat Weight 0.20 CARAT

Color Grade E

Clarity Grade SI 1

Cut Grade VERY GOOD

Polish EXCELLENT

Symmetry VERY GOOD

Fluorescence NONE

Inscription(s) IGI LG729563673

Comments: As Grown - No indication of post-growth treatment. This Laboratory Grown Diamond was created by High Pressure High Temperature (HPHT) growth process. Type II



August 23, 2025

IGI Report Number LG729563673

ROUND BRILLIANT

LABORATORY GROWN DIAMOND

3.73 - 3.75 X 2.25 MM

Carat Weight 0.20 CARAT

Color Grade E

Clarity Grade SI 1

Cut Grade VERY GOOD

Polish EXCELLENT

Symmetry VERY GOOD

Fluorescence NONE

Inscription(s) IGI LG729563673

Comments: As Grown - No indication of post-growth treatment. This Laboratory Grown Diamond was created by High Pressure High Temperature (HPHT) growth process. Type II



THIS DOCUMENT WAS PRODUCED WITH THE FOLLOWING SECURITY MEASURES: SPECIAL DOCUMENT PAPER, INK SCREENS, WATERMARK, BACKGROUND DESIGNS, HOLOGRAM AND OTHER SECURITY FEATURES NOT LISTED AND DO EXCEED DOCUMENT SECURITY INDUSTRY GUIDELINES.

For terms & conditions and to verify this report, please visit [www.igi.org](http://www.igi.org)