



**ELECTRONIC COPY**

LG729570973  
Report verification at igi.org



September 22, 2025

IGI Report Number **LG729570973**

Description **LABORATORY GROWN DIAMOND**

Shape and Cutting Style **ROUND BRILLIANT**

Measurements **8.29 - 8.36 X 5.00 MM**

**GRADING RESULTS**

Carat Weight **2.10 CARATS**

Color Grade **E**

Clarity Grade **VVS 2**

Cut Grade **IDEAL**

September 22, 2025  
IGI Report Number **LG729570973**  
Description **LABORATORY GROWN DIAMOND**  
Shape and Cutting Style **ROUND BRILLIANT**  
Measurements **8.29 - 8.36 X 5.00 MM**

**GRADING RESULTS**

Carat Weight **2.10 CARATS**

Color Grade **E**

Clarity Grade **VVS 2**

Cut Grade **IDEAL**

**ADDITIONAL GRADING INFORMATION**

Polish **EXCELLENT**

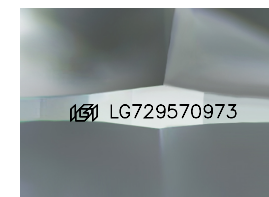
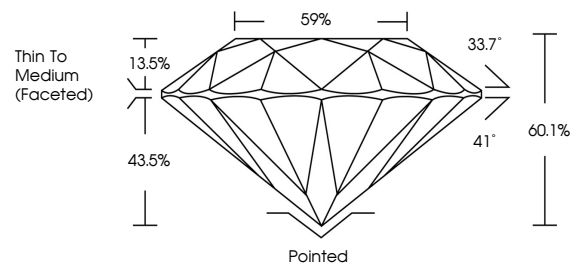
Symmetry **EXCELLENT**

Fluorescence **NONE**

Inscription(s) **IGI LG729570973**

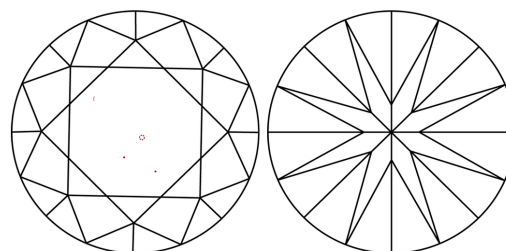
Comments: This Laboratory Grown Diamond was created by Chemical Vapor Deposition (CVD) growth process.  
Type IIa

**PROPORTIONS**



Sample Image Used

**CLARITY CHARACTERISTICS**



**KEY TO SYMBOLS**

Red symbols indicate internal characteristics.  
Green symbols indicate external characteristics.

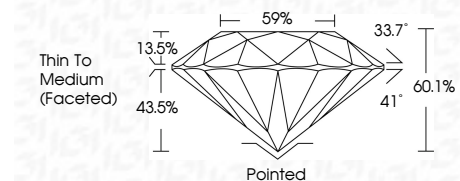
**COLOR**

D E F G H I J Faint Very Light Light

**CLARITY**

IF WS<sup>1-2</sup> VS<sup>1-2</sup> SI<sup>1-2</sup> I<sup>1-3</sup>

Internally Flawless Very Very Slightly Included Very Slightly Included Slightly Included Included



**ADDITIONAL GRADING INFORMATION**

Polish **EXCELLENT**

Symmetry **EXCELLENT**

Fluorescence **NONE**

Inscription(s) **IGI LG729570973**

Comments: This Laboratory Grown Diamond was created by Chemical Vapor Deposition (CVD) growth process.  
Type IIa



**IGI**



|                    |                           |              |             |             |           |              |       |                          |                 |           |           |        |                          |
|--------------------|---------------------------|--------------|-------------|-------------|-----------|--------------|-------|--------------------------|-----------------|-----------|-----------|--------|--------------------------|
| September 22, 2025 | IGI Report No LG729570973 | 2.10 CARATS  | E           | VVS 2       | IDEAL     | 60.1%        | 59%   | Thin To Medium (Faceted) | Pointed         | EXCELLENT | EXCELLENT | NONE   | IGI LG729570973          |
| IGI Report No      | LG729570973               | Carat Weight | 2.10 CARATS | Color Grade | VVS 2     | Cut Grade    | IDEAL | Depth                    | 60.1%           | Table     | 59%       | Grille | Thin To Medium (Faceted) |
| Culet              | None                      | Polish       | EXCELLENT   | Symmetry    | EXCELLENT | Fluorescence | NONE  | Inscription(s)           | IGI LG729570973 |           |           |        |                          |

Comments: This Laboratory Grown Diamond was created by Chemical Vapor Deposition (CVD) growth process.  
Type IIa