



ELECTRONIC COPY

LABORATORY GROWN DIAMOND REPORT

August 28, 2025
IGI Report Number LG729583319
Description LABORATORY GROWN DIAMOND
Shape and Cutting Style EMERALD CUT
Measurements 11.35 X 7.79 X 5.20 MM

GRADING RESULTS

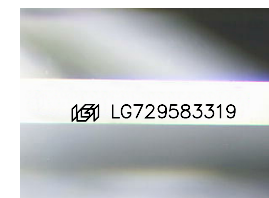
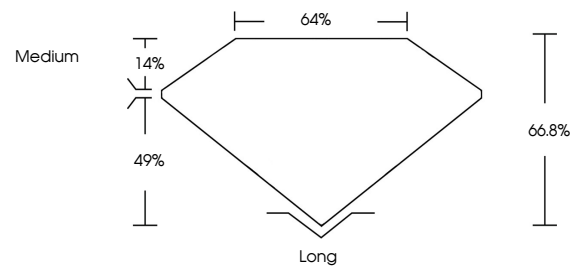
Carat Weight 4.60 CARATS
Color Grade F
Clarity Grade VS 2

ADDITIONAL GRADING INFORMATION

Polish EXCELLENT
Symmetry EXCELLENT
Fluorescence NONE
Inscription(s) IGI LG729583319

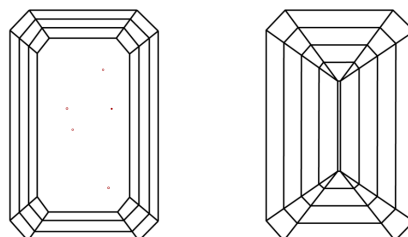
Comments: This Laboratory Grown Diamond was created by Chemical Vapor Deposition (CVD) growth process.
Type IIa

PROPORTIONS



Sample Image Used

CLARITY CHARACTERISTICS



KEY TO SYMBOLS

Red symbols indicate internal characteristics.
Green symbols indicate external characteristics.

COLOR

D E F G H I J Faint Very Light Light

CLARITY

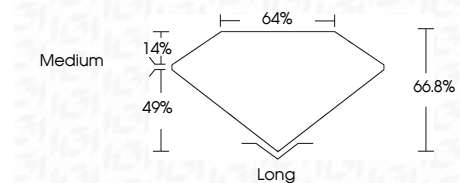
IF WS¹⁻² VS¹⁻² SI¹⁻² I¹⁻³
Internally Flawless Very Very Slightly Included Very Slightly Included Slightly Included Included



August 28, 2025
IGI Report Number LG729583319
Description LABORATORY GROWN DIAMOND
Shape and Cutting Style EMERALD CUT
Measurements 11.35 X 7.79 X 5.20 MM

GRADING RESULTS

Carat Weight 4.60 CARATS
Color Grade F
Clarity Grade VS 2



ADDITIONAL GRADING INFORMATION

Polish EXCELLENT
Symmetry EXCELLENT
Fluorescence NONE
Inscription(s) IGI LG729583319
Comments: This Laboratory Grown Diamond was created by Chemical Vapor Deposition (CVD) growth process.
Type IIa



IGI



August 28, 2025
IGI Report No LG729583319
EMERALD CUT
11.35 X 7.79 X 5.20 MM
4.60 CARATS
F
VS 2
66.8%
49%
Medium
Long
EXCELLENT
EXCELLENT
NONE
IGI LG729583319
Comments: This Laboratory Grown Diamond was created by Chemical Vapor Deposition (CVD) growth process.
Type IIa