



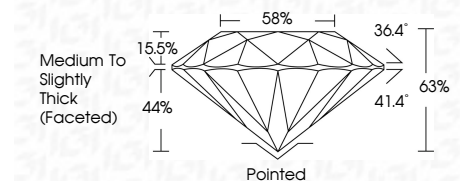
ELECTRONIC COPY

LG729594501 Report verification at igi.org



August 25, 2025 IGI Report Number LG729594501 Description LABORATORY GROWN DIAMOND Shape and Cutting Style ROUND BRILLIANT Measurements 9.25 - 9.29 X 5.83 MM

GRADING RESULTS Carat Weight 3.09 CARATS Color Grade E Clarity Grade VS 1 Cut Grade EXCELLENT



ADDITIONAL GRADING INFORMATION Polish EXCELLENT Symmetry EXCELLENT Fluorescence NONE Inscription(s) IGI LG729594501 Comments: This Laboratory Grown Diamond was created by Chemical Vapor Deposition (CVD) growth process. Type IIa



August 25, 2025 IGI Report No LG729594501 ROUND BRILLIANT 9.25 - 9.29 X 5.83 MM 3.09 CARATS E VS 1 EXCELLENT 65% 68% Medium To Slightly Thick (Faceted) Pointed EXCELLENT EXCELLENT NONE NONE IGI LG729594501

LABORATORY GROWN DIAMOND REPORT

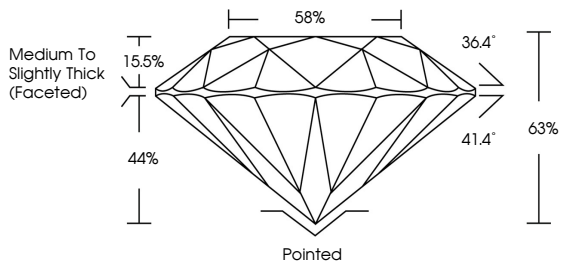
August 25, 2025 IGI Report Number LG729594501 Description LABORATORY GROWN DIAMOND Shape and Cutting Style ROUND BRILLIANT Measurements 9.25 - 9.29 X 5.83 MM

GRADING RESULTS Carat Weight 3.09 CARATS Color Grade E Clarity Grade VS 1 Cut Grade EXCELLENT

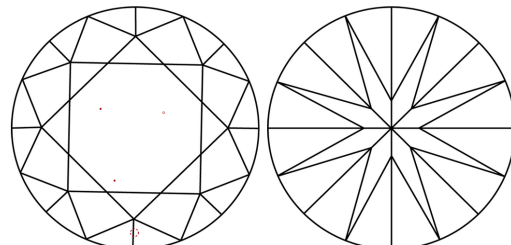
ADDITIONAL GRADING INFORMATION Polish EXCELLENT Symmetry EXCELLENT Fluorescence NONE Inscription(s) IGI LG729594501

Comments: This Laboratory Grown Diamond was created by Chemical Vapor Deposition (CVD) growth process. Type IIa

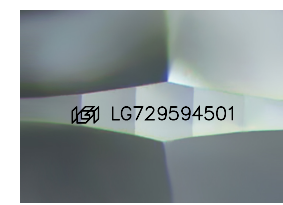
PROPORTIONS



CLARITY CHARACTERISTICS



KEY TO SYMBOLS Red symbols indicate internal characteristics. Green symbols indicate external characteristics.



Sample Image Used

Color scale table with categories D, E, F, G, H, I, J, Faint, Very Light, Light

Clarity scale table with categories IF, WS 1-2, VS 1-2, SI 1-2, I 1-3, Internally Flawless, Very Very Slightly Included, Very Slightly Included, Slightly Included, Included

