



**ELECTRONIC COPY**

LG729595292  
Report verification at igi.org



September 11, 2025  
IGI Report Number **LG729595292**  
Description **LABORATORY GROWN DIAMOND**  
Shape and Cutting Style **CUT CORNERED  
RECTANGULAR MODIFIED  
BRILLIANT**  
Measurements **6.49 X 5.17 X 3.59 MM**  
**GRADING RESULTS**  
Carat Weight **1.22 CARAT**  
Color Grade **FANCY INTENSE YELLOW**  
Clarity Grade **VVS 2**

September 11, 2025  
IGI Report Number **LG729595292**  
Description **LABORATORY GROWN DIAMOND**  
Shape and Cutting Style **CUT CORNERED RECTANGULAR  
MODIFIED BRILLIANT**  
Measurements **6.49 X 5.17 X 3.59 MM**

**GRADING RESULTS**

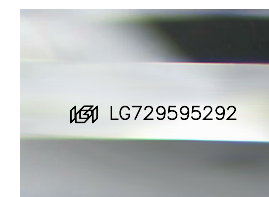
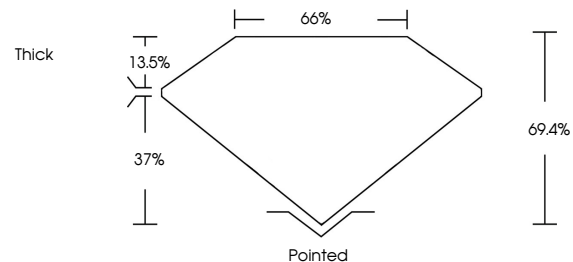
Carat Weight **1.22 CARAT**  
Color Grade **FANCY INTENSE YELLOW**  
Clarity Grade **VVS 2**

**ADDITIONAL GRADING INFORMATION**

Polish **EXCELLENT**  
Symmetry **EXCELLENT**  
Fluorescence **NONE**  
Inscription(s) **IGI LG729595292**

Comments: This Laboratory Grown Diamond was created by Chemical Vapor Deposition (CVD) growth process.

**PROPORTIONS**



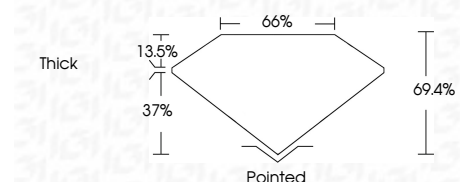
Sample Image Used

**COLOR**

D E F G H I J Faint Very Light Light

**CLARITY**

IF	VS <sup>1-2</sup>	VS <sup>1-2</sup>	SI <sup>1-2</sup>	I <sup>1-3</sup>
Internally Flawless	Very Very Slightly Included	Very Slightly Included	Slightly Included	Included



**ADDITIONAL GRADING INFORMATION**

Polish **EXCELLENT**  
Symmetry **EXCELLENT**  
Fluorescence **NONE**  
Inscription(s) **IGI LG729595292**  
Comments: This Laboratory Grown Diamond was created by Chemical Vapor Deposition (CVD) growth process.



**IGI**



September 11, 2025  
IGI Report No LG729595292  
CUT CORNERED RECT. MODIFIED BRILLIANT  
6.49 X 5.17 X 3.59 MM  
1.22 CARAT  
FANCY INTENSE YELLOW  
VVS 2  
69.4%  
37%  
13.5%  
Thick  
Pointed  
EXCELLENT  
EXCELLENT  
NONE  
IGI LG729595292

Comments: This Laboratory Grown Diamond was created by Chemical Vapor Deposition (CVD) growth process.