



ELECTRONIC COPY

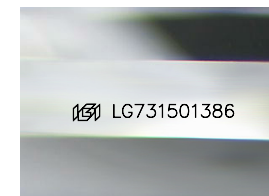
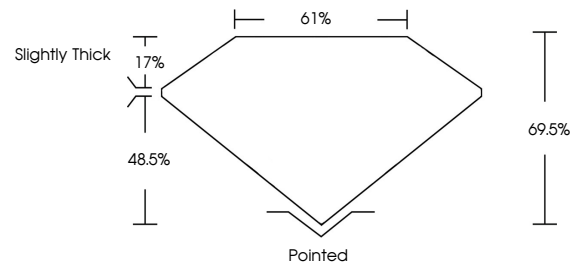
LG731501386
Report verification at igi.org



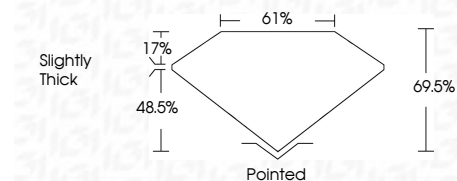
August 29, 2025
IGI Report Number **LG731501386**
Description **LABORATORY GROWN DIAMOND**
Shape and Cutting Style **CUT CORNERED
RECTANGULAR MODIFIED
BRILLIANT**
Measurements **12.83 X 9.66 X 6.71 MM**
GRADING RESULTS
Carat Weight **8.10 CARATS**
Color Grade **FANCY INTENSE GREYISH
YELLOW**
Clarity Grade **VVS 2**

August 29, 2025
IGI Report Number **LG731501386**
Description **LABORATORY GROWN DIAMOND**
Shape and Cutting Style **CUT CORNERED RECTANGULAR
MODIFIED BRILLIANT**
Measurements **12.83 X 9.66 X 6.71 MM**
GRADING RESULTS
Carat Weight **8.10 CARATS**
Color Grade **FANCY INTENSE GREYISH
YELLOW**
Clarity Grade **VVS 2**

PROPORTIONS



Sample Image Used



ADDITIONAL GRADING INFORMATION

Polish **EXCELLENT**
Symmetry **EXCELLENT**
Fluorescence **NONE**
Inscription(s) **IGI LG731501386**

Comments: This Laboratory Grown Diamond was created by Chemical Vapor Deposition (CVD) growth process.

COLOR

D E F G H I J Faint Very Light Light

CLARITY

IF	VS ¹⁻²	VS ¹⁻²	SI ¹⁻²	I ¹⁻³
Internally Flawless	Very Very Slightly Included	Very Slightly Included	Slightly Included	Included

ADDITIONAL GRADING INFORMATION

Polish **EXCELLENT**
Symmetry **EXCELLENT**
Fluorescence **NONE**
Inscription(s) **IGI LG731501386**
Comments: This Laboratory Grown Diamond was created by Chemical Vapor Deposition (CVD) growth process.



IGI



August 29, 2025
IGI Report No LG731501386
CUT CORNERED RECT. MODIFIED BRILLIANT
8.10 CARATS
FANCY INTENSE GREYISH YELLOW
VVS 2
69.6%
61%
Slightly Thick
Pointed
EXCELLENT
EXCELLENT
NONE
IGI LG731501386
Comments: This Laboratory Grown Diamond was created by Chemical Vapor Deposition (CVD) growth process.