



LABORATORY GROWN DIAMOND REPORT

August 28, 2025
 IGI Report Number **LG731502139**
 Description **LABORATORY GROWN DIAMOND**
 Shape and Cutting Style **PRINCESS CUT**
 Measurements **5.09 X 4.93 X 3.33 MM**

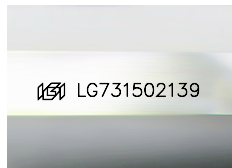
GRADING RESULTS

Carat Weight **0.72 CARAT**
 Color Grade **D**
 Clarity Grade **VS 1**

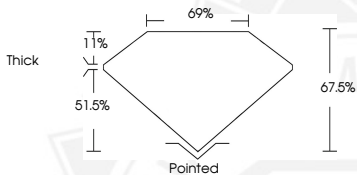
ADDITIONAL GRADING INFORMATION

Polish **VERY GOOD**
 Symmetry **FAIR**
 Fluorescence **NONE**
 Inscription(s) **IGI LG731502139**

Comments: This Laboratory Grown Diamond was created by
 Chemical Vapor Deposition (CVD) growth process.
 Type IIa



Sample Image Used



August 28, 2025
 IGI Report Number **LG731502139**
PRINCESS CUT
LABORATORY GROWN DIAMOND
5.09 X 4.93 X 3.33 MM
 Carat Weight **0.72 CARAT**
 Color Grade **D**
 Clarity Grade **VS 1**
 Polish **VERY GOOD**
 Symmetry **FAIR**
 Fluorescence **NONE**
 Inscription(s) **IGI LG731502139**

Comments: This Laboratory Grown
 Diamond was created by
 Chemical Vapor Deposition (CVD)
 growth process. Type IIa



August 28, 2025
 IGI Report Number **LG731502139**
PRINCESS CUT
LABORATORY GROWN DIAMOND
5.09 X 4.93 X 3.33 MM
 Carat Weight **0.72 CARAT**
 Color Grade **D**
 Clarity Grade **VS 1**
 Polish **VERY GOOD**
 Symmetry **FAIR**
 Fluorescence **NONE**
 Inscription(s) **IGI LG731502139**

Comments: This Laboratory Grown
 Diamond was created by
 Chemical Vapor Deposition (CVD)
 growth process. Type IIa



THIS DOCUMENT WAS PRODUCED WITH THE FOLLOWING SECURITY MEASURES: SPECIAL DOCUMENT PAPER, INK SCREENS, WATERMARK, BACKGROUND DESIGNS, HOLOGRAM AND OTHER SECURITY FEATURES NOT LISTED AND DO EXCEED DOCUMENT SECURITY INDUSTRY GUIDELINES.