



# INTERNATIONAL GEMOLOGICAL INSTITUTE

ELECTRONIC COPY

## LABORATORY GROWN DIAMOND REPORT

September 3, 2025  
IGI Report Number **LG731517081**  
Description **LABORATORY GROWN DIAMOND**  
Shape and Cutting Style **EMERALD CUT**  
Measurements **5.44 X 3.63 X 2.43 MM**

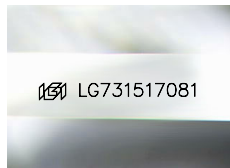
### GRADING RESULTS

Carat Weight **0.46 CARAT**  
Color Grade **E**  
Clarity Grade **INTERNALLY FLAWLESS**  
Cut Grade **VERY GOOD**

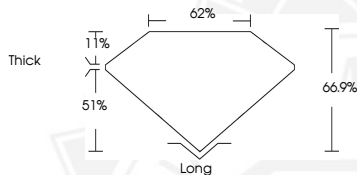
### ADDITIONAL GRADING INFORMATION

Polish **EXCELLENT**  
Symmetry **EXCELLENT**  
Fluorescence **NONE**  
Inscription(s) **IGI LG731517081**

Comments: As Grown - No indication of post-growth treatment. This Laboratory Grown Diamond was created by High Pressure High Temperature (HPHT) growth process. Type II



Sample Image Used



September 3, 2025

IGI Report Number **LG731517081**

**EMERALD CUT**

**LABORATORY GROWN DIAMOND**

**5.44 X 3.63 X 2.43 MM**

Carat Weight **0.46 CARAT**

Color Grade **E**

Clarity Grade **I.F.**

Cut Grade **VERY GOOD**

Polish **EXCELLENT**

Symmetry **EXCELLENT**

Fluorescence **NONE**

Inscription(s) **IGI LG731517081**

Comments: As Grown - No indication of post-growth treatment. This Laboratory Grown Diamond was created by High Pressure High Temperature (HPHT) growth process. Type II



September 3, 2025

IGI Report Number **LG731517081**

**EMERALD CUT**

**LABORATORY GROWN DIAMOND**

**5.44 X 3.63 X 2.43 MM**

Carat Weight **0.46 CARAT**

Color Grade **E**

Clarity Grade **I.F.**

Cut Grade **VERY GOOD**

Polish **EXCELLENT**

Symmetry **EXCELLENT**

Fluorescence **NONE**

Inscription(s) **IGI LG731517081**

Comments: As Grown - No indication of post-growth treatment. This Laboratory Grown Diamond was created by High Pressure High Temperature (HPHT) growth process. Type II



THIS DOCUMENT WAS PRODUCED WITH THE FOLLOWING SECURITY MEASURES: SPECIAL DOCUMENT PAPER, INK SCREENS, WATERMARK, BACKGROUND DESIGNS, HOLOGRAM AND OTHER SECURITY FEATURES NOT LISTED AND DO EXCEED DOCUMENT SECURITY INDUSTRY GUIDELINES.

For terms & conditions and to verify this report, please visit [www.igi.org](http://www.igi.org)