



**ELECTRONIC COPY**

LG731523436  
Report verification at igi.org



August 30, 2025

IGI Report Number **LG731523436**

Description **LABORATORY GROWN DIAMOND**

Shape and Cutting Style **PRINCESS CUT**

Measurements **9.46 X 9.40 X 6.82 MM**

**GRADING RESULTS**

Carat Weight **5.09 CARATS**

Color Grade **E**

Clarity Grade **VVS 2**

**LABORATORY GROWN DIAMOND REPORT**

August 30, 2025

IGI Report Number **LG731523436**

Description **LABORATORY GROWN DIAMOND**

Shape and Cutting Style **PRINCESS CUT**

Measurements **9.46 X 9.40 X 6.82 MM**

**GRADING RESULTS**

Carat Weight **5.09 CARATS**

Color Grade **E**

Clarity Grade **VVS 2**

**ADDITIONAL GRADING INFORMATION**

Polish **EXCELLENT**

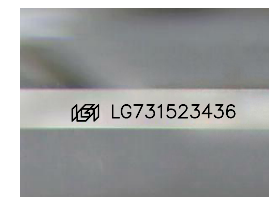
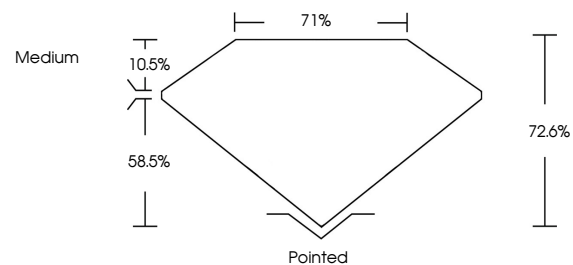
Symmetry **EXCELLENT**

Fluorescence **NONE**

Inscription(s) **IGI LG731523436**

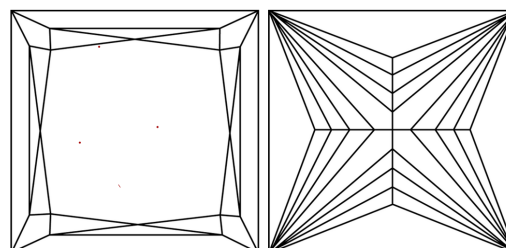
Comments: This Laboratory Grown Diamond was created by Chemical Vapor Deposition (CVD) growth process. Type IIa

**PROPORTIONS**



Sample Image Used

**CLARITY CHARACTERISTICS**



**KEY TO SYMBOLS**

Red symbols indicate internal characteristics.  
Green symbols indicate external characteristics.

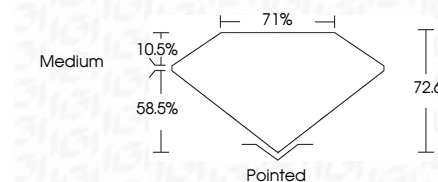
**COLOR**

D E F G H I J Faint Very Light Light

**CLARITY**

IF VS<sup>1-2</sup> VS<sup>1-2</sup> SI<sup>1-2</sup> I<sup>1-3</sup>

Internally Flawless Very Very Slightly Included Very Slightly Included Slightly Included Included



**ADDITIONAL GRADING INFORMATION**

Polish **EXCELLENT**

Symmetry **EXCELLENT**

Fluorescence **NONE**

Inscription(s) **IGI LG731523436**

Comments: This Laboratory Grown Diamond was created by Chemical Vapor Deposition (CVD) growth process. Type IIa



**IGI**



August 30, 2025  
IGI Report No LG731523436  
PRINCESS CUT

5.09 CARATS  
E

9.46 X 9.40 X 6.82 MM  
VVS 2  
72.6%  
71%  
Medium

Pointed  
EXCELLENT  
EXCELLENT  
NONE  
IGI LG731523436

Culet  
Polish  
Symmetry  
Fluorescence  
Inscription(s)

Comments: This Laboratory Grown Diamond was created by Chemical Vapor Deposition (CVD) growth process. Type IIa