



ELECTRONIC COPY

LG731534995
Report verification at igi.org



August 29, 2025

IGI Report Number **LG731534995**

Description **LABORATORY GROWN DIAMOND**

Shape and Cutting Style **PRINCESS CUT**

Measurements **9.88 X 9.81 X 6.98 MM**

GRADING RESULTS

Carat Weight **5.91 CARATS**

Color Grade **E**

Clarity Grade **VVS 2**

August 29, 2025
IGI Report Number **LG731534995**
Description **LABORATORY GROWN DIAMOND**
Shape and Cutting Style **PRINCESS CUT**
Measurements **9.88 X 9.81 X 6.98 MM**

GRADING RESULTS

Carat Weight **5.91 CARATS**

Color Grade **E**

Clarity Grade **VVS 2**

ADDITIONAL GRADING INFORMATION

Polish **EXCELLENT**

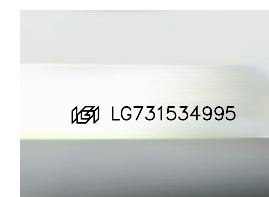
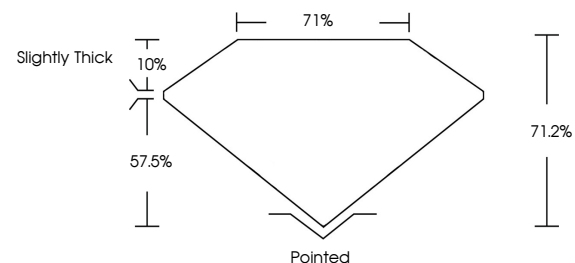
Symmetry **EXCELLENT**

Fluorescence **NONE**

Inscription(s) **IGI LG731534995**

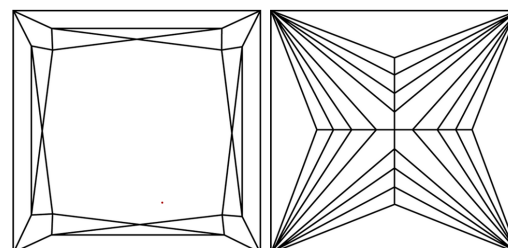
Comments: This Laboratory Grown Diamond was created by Chemical Vapor Deposition (CVD) growth process.
Type IIa

PROPORTIONS



Sample Image Used

CLARITY CHARACTERISTICS



KEY TO SYMBOLS

Red symbols indicate internal characteristics.
Green symbols indicate external characteristics.

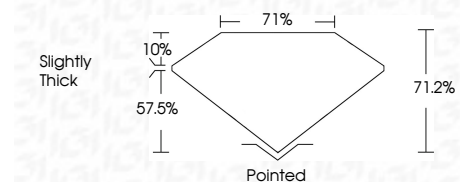
COLOR

D E F G H I J Faint Very Light Light

CLARITY

IF VS¹⁻² VS¹⁻² SI¹⁻² I¹⁻³

Internally Flawless Very Very Slightly Included Very Slightly Included Slightly Included Included



ADDITIONAL GRADING INFORMATION

Polish **EXCELLENT**

Symmetry **EXCELLENT**

Fluorescence **NONE**

Inscription(s) **IGI LG731534995**

Comments: This Laboratory Grown Diamond was created by Chemical Vapor Deposition (CVD) growth process.
Type IIa



IGI



August 29, 2025
IGI Report No LG731534995
PRINCESS CUT

9.88 X 9.81 X 6.98 MM
5.91 CARATS
E
VVS 2
71.2%
71%
Slightly Thick

Pointed
EXCELLENT
EXCELLENT
NONE
IGI LG731534995

Comments: This Laboratory Grown Diamond was created by Chemical Vapor Deposition (CVD) growth process.
Type IIa