



ELECTRONIC COPY

LG731575714
Report verification at igi.org



September 26, 2025
IGI Report Number **LG731575714**
Description **LABORATORY GROWN DIAMOND**
Shape and Cutting Style **CUT CORNERED
RECTANGULAR MODIFIED
BRILLIANT**
Measurements **9.23 X 6.71 X 4.45 MM**
GRADING RESULTS
Carat Weight **2.61 CARATS**
Color Grade **G**
Clarity Grade **VVS 2**

September 26, 2025
IGI Report Number **LG731575714**
Description **LABORATORY GROWN DIAMOND**
Shape and Cutting Style **CUT CORNERED RECTANGULAR
MODIFIED BRILLIANT**
Measurements **9.23 X 6.71 X 4.45 MM**

GRADING RESULTS

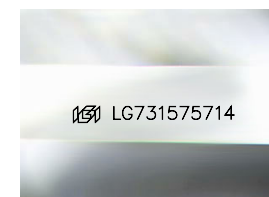
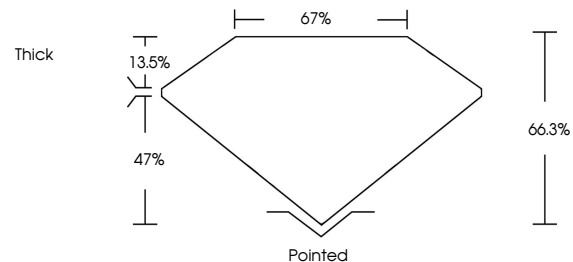
Carat Weight **2.61 CARATS**
Color Grade **G**
Clarity Grade **VVS 2**

ADDITIONAL GRADING INFORMATION

Polish **EXCELLENT**
Symmetry **EXCELLENT**
Fluorescence **NONE**
Inscription(s) **IGI LG731575714**

Comments: This Laboratory Grown Diamond was created by Chemical Vapor Deposition (CVD) growth process. Type IIa

PROPORTIONS



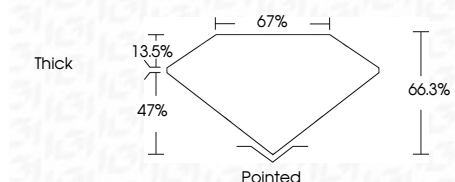
Sample Image Used

COLOR

D E F G H I J Faint Very Light Light

CLARITY

| FL | IF | VVS ¹⁻² | VS ¹⁻² | SI ¹⁻² | I ¹⁻³ |
|----------|---------------------|-----------------------------|------------------------|-------------------|------------------|
| Flawless | Internally Flawless | Very Very Slightly Included | Very Slightly Included | Slightly Included | Included |



ADDITIONAL GRADING INFORMATION

Polish **EXCELLENT**
Symmetry **EXCELLENT**
Fluorescence **NONE**
Inscription(s) **IGI LG731575714**
Comments: This Laboratory Grown Diamond was created by Chemical Vapor Deposition (CVD) growth process. Type IIa



IGI



September 26, 2025
IGI Report No LG731575714
CUT CORNERED RECT. MODIFIED BRILLIANT
9.23 X 6.71 X 4.45 MM
2.61 CARATS
G
VVS 2
66.3%
67%
Thick
Pointed
EXCELLENT
EXCELLENT
NONE
IGI LG731575714

Comments: This Laboratory Grown Diamond was created by Chemical Vapor Deposition (CVD) growth process. Type IIa