



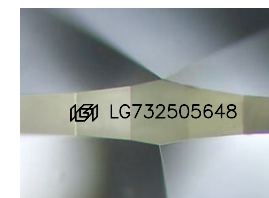
**ELECTRONIC COPY**

LG732505648  
Report verification at igi.org



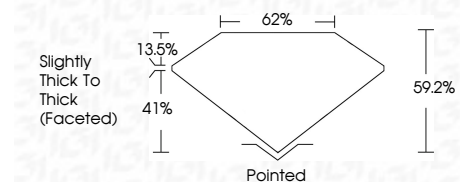
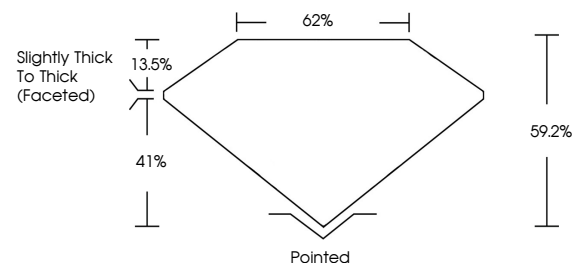
September 4, 2025  
IGI Report Number **LG732505648**  
Description **LABORATORY GROWN DIAMOND**  
Shape and Cutting Style **PEAR BRILLIANT**  
Measurements **13.17 X 7.72 X 4.57 MM**

**GRADING RESULTS**  
Carat Weight **2.80 CARATS**  
Color Grade **E**  
Clarity Grade **VS 1**

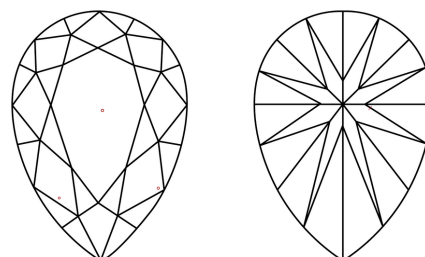


Sample Image Used

**PROPORTIONS**



**CLARITY CHARACTERISTICS**



**KEY TO SYMBOLS**

Red symbols indicate internal characteristics.  
Green symbols indicate external characteristics.

**COLOR**

D E F G H I J Faint Very Light Light

**CLARITY**

IF	VS <sup>1-2</sup>	VS <sup>1-2</sup>	SI <sup>1-2</sup>	I <sup>1-3</sup>
Internally Flawless	Very Very Slightly Included	Very Slightly Included	Slightly Included	Included

**ADDITIONAL GRADING INFORMATION**

Polish **EXCELLENT**  
Symmetry **EXCELLENT**  
Fluorescence **NONE**  
Inscription(s) **IGI LG732505648**  
Comments: This Laboratory Grown Diamond was created by Chemical Vapor Deposition (CVD) growth process. Type IIa



**IGI**



September 4, 2025  
IGI Report No LG732505648  
PEAR BRILLIANT  
2.80 CARATS  
E  
13.17 X 7.72 X 4.57 MM  
Carat Weight  
Color Grade  
Clarity Grade  
Depth  
Table  
Girdle  
Slightly Thick To Thick (Faceted)  
62%  
62%  
Pointed  
EXCELLENT  
EXCELLENT  
NONE  
IGI LG732505648  
Culet  
Polish  
Symmetry  
Fluorescence  
Inscription(s)

Comments: This Laboratory Grown Diamond was created by Chemical Vapor Deposition (CVD) growth process. Type IIa