



ELECTRONIC COPY

LG732512565 Report verification at igi.org



September 4, 2025
IGI Report Number LG732512565
Description LABORATORY GROWN DIAMOND
Shape and Cutting Style SQUARE CUSHION MODIFIED BRILLIANT
Measurements 10.22 X 10.03 X 6.80 MM
GRADING RESULTS
Carat Weight 5.36 CARATS
Color Grade E
Clarity Grade VVS 2

LABORATORY GROWN DIAMOND REPORT

September 4, 2025
IGI Report Number LG732512565
Description LABORATORY GROWN DIAMOND
Shape and Cutting Style SQUARE CUSHION MODIFIED BRILLIANT
Measurements 10.22 X 10.03 X 6.80 MM

GRADING RESULTS

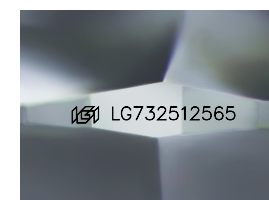
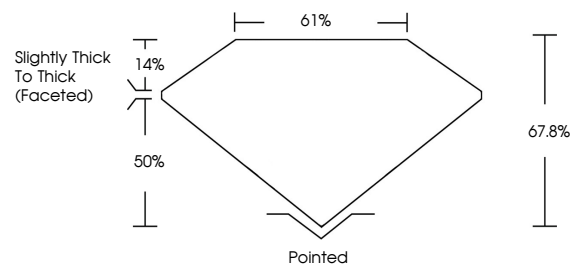
Carat Weight 5.36 CARATS
Color Grade E
Clarity Grade VVS 2

ADDITIONAL GRADING INFORMATION

Polish EXCELLENT
Symmetry EXCELLENT
Fluorescence NONE
Inscription(s) LG732512565

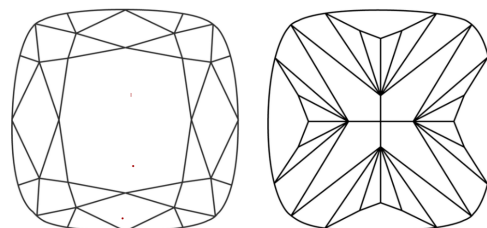
Comments: This Laboratory Grown Diamond was created by Chemical Vapor Deposition (CVD) growth process. Type IIa

PROPORTIONS



Sample Image Used

CLARITY CHARACTERISTICS



KEY TO SYMBOLS

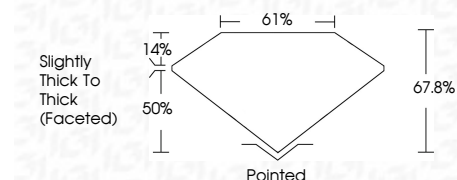
Red symbols indicate internal characteristics. Green symbols indicate external characteristics.

COLOR

D E F G H I J Faint Very Light Light

CLARITY

IF WS 1-2 VS 1-2 SI 1-2 I 1-3
Internally Flawless Very Very Slightly Included Very Slightly Included Slightly Included Included



ADDITIONAL GRADING INFORMATION

Polish EXCELLENT
Symmetry EXCELLENT
Fluorescence NONE
Inscription(s) LG732512565
Comments: This Laboratory Grown Diamond was created by Chemical Vapor Deposition (CVD) growth process. Type IIa



September 4, 2025
IGI Report No LG732512565
SQUARE CUSHION MODIFIED BRILLIANT
10.22 X 10.03 X 6.80 MM
5.36 CARATS E
5.36 CARATS E
VVS 2
67.8% 61%
Slightly Thick To Thick (Faceted)
Pointed
EXCELLENT EXCELLENT
NONE
Inscription(s) LG732512565
Comments: This Laboratory Grown Diamond was created by Chemical Vapor Deposition (CVD) growth process. Type IIa