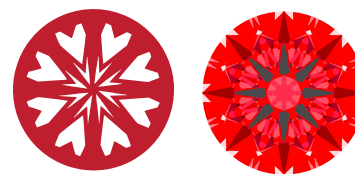
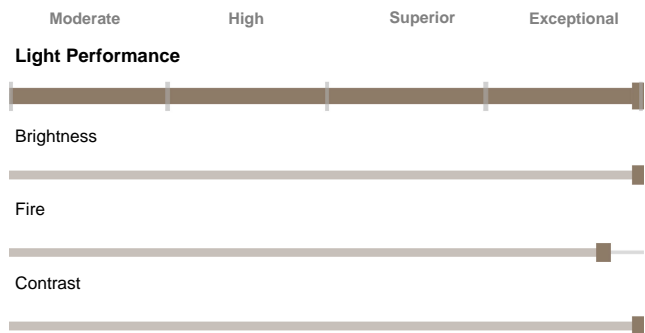




Light Performance Grade: Exceptional



Structured Light Environment Representation

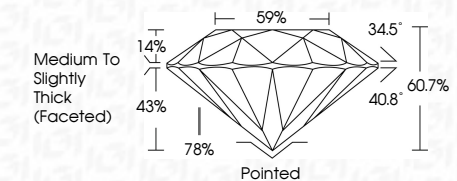


COLOR scale from D to Light

CLARITY scale from IF to Included



September 8, 2025 IGI Report Number LG732528731 Description LABORATORY GROWN DIAMOND Shape and Cutting Style ROUND BRILLIANT Measurements 9.26 - 9.31 X 5.64 MM GRADING RESULTS Carat Weight 3.01 CARATS Color Grade D Clarity Grade VS 2 Cut Grade IDEAL



ADDITIONAL GRADING INFORMATION Polish EXCELLENT Symmetry EXCELLENT Fluorescence NONE Inscription(s) IGI LG732528731 Comments: HEARTS & ARROWS This Laboratory Grown Diamond was created by Chemical Vapor Deposition (CVD) growth process. Type IIa

ELECTRONIC COPY LABORATORY GROWN DIAMOND REPORT

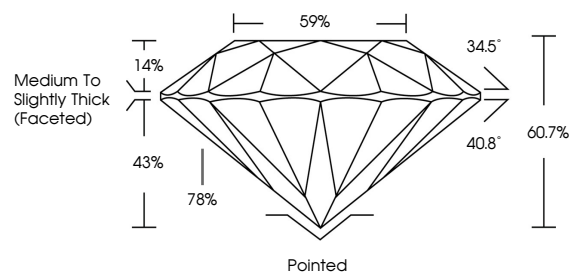
September 8, 2025 IGI Report Number LG732528731 Description LABORATORY GROWN DIAMOND Shape and Cutting Style ROUND BRILLIANT Measurements 9.26 - 9.31 x 5.64 mm

GRADING RESULTS Carat Weight 3.01 CARATS Color Grade D Clarity Grade VS 2 Cut Grade IDEAL

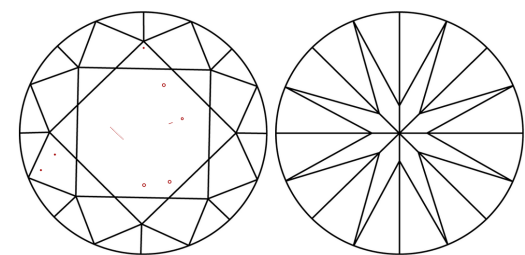
ADDITIONAL GRADING INFORMATION Polish EXCELLENT Symmetry EXCELLENT Fluorescence NONE Inscription(s) IGI LG732528731

Comments: HEARTS & ARROWS This Laboratory Grown Diamond was created by Chemical Vapor Deposition (CVD) growth process. Type IIa

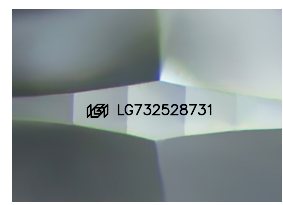
PROPORTIONS



CLARITY CHARACTERISTICS



KEY TO SYMBOLS Red symbols indicate internal characteristics. Green symbols indicate external characteristics.



Sample Image Used



Summary table of report details: September 8, 2025, IGI Report No. LG732528731, ROUND BRILLIANT, 3.01 CARATS, D, VS 2, IDEAL, 9.26 - 9.31 X 5.64 MM, 60.7%, 59%, Medium To Slightly Thick (Faceted), Pointed, EXCELLENT, EXCELLENT, NONE, IGI LG732528731