



**ELECTRONIC COPY**

LG732549533  
Report verification at igi.org



September 5, 2025  
IGI Report Number **LG732549533**  
Description **LABORATORY GROWN DIAMOND**  
Shape and Cutting Style **CUSHION MODIFIED BRILLIANT**  
Measurements **11.18 X 7.23 X 4.95 MM**  
**GRADING RESULTS**  
Carat Weight **3.62 CARATS**  
Color Grade **D**  
Clarity Grade **VVS 1**

September 5, 2025  
IGI Report Number **LG732549533**  
Description **LABORATORY GROWN DIAMOND**  
Shape and Cutting Style **CUSHION MODIFIED BRILLIANT**  
Measurements **11.18 X 7.23 X 4.95 MM**

**GRADING RESULTS**

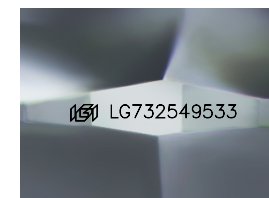
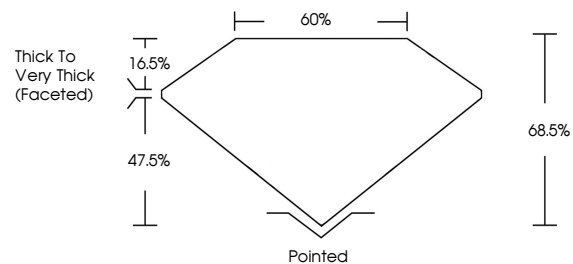
Carat Weight **3.62 CARATS**  
Color Grade **D**  
Clarity Grade **VVS 1**

**ADDITIONAL GRADING INFORMATION**

Polish **EXCELLENT**  
Symmetry **EXCELLENT**  
Fluorescence **NONE**  
Inscription(s) **IGI LG732549533**

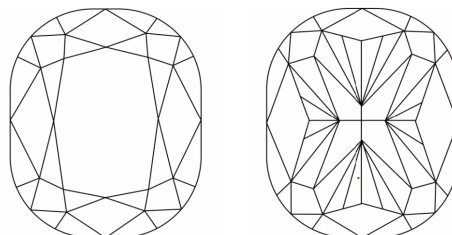
Comments: This Laboratory Grown Diamond was created by Chemical Vapor Deposition (CVD) growth process.  
Type IIa

**PROPORTIONS**



Sample Image Used

**CLARITY CHARACTERISTICS**



**KEY TO SYMBOLS**

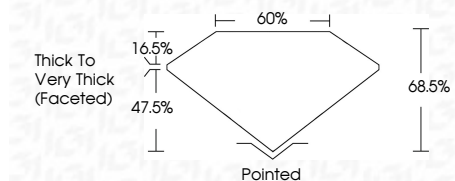
Red symbols indicate internal characteristics.  
Green symbols indicate external characteristics.

**COLOR**

D E F G H I J Faint Very Light Light

**CLARITY**

IF	VS <sup>1-2</sup>	VS <sup>1-2</sup>	SI <sup>1-2</sup>	I <sup>1-3</sup>
Internally Flawless	Very Very Slightly Included	Very Slightly Included	Slightly Included	Included



**ADDITIONAL GRADING INFORMATION**

Polish **EXCELLENT**  
Symmetry **EXCELLENT**  
Fluorescence **NONE**  
Inscription(s) **IGI LG732549533**  
Comments: This Laboratory Grown Diamond was created by Chemical Vapor Deposition (CVD) growth process.  
Type IIa



September 5, 2025  
IGI Report No LG732549533  
**CUSHION MODIFIED BRILLIANT**  
11.18 X 7.23 X 4.95 MM  
3.62 CARATS  
D  
VVS 1  
3.62 CARATS  
D  
VVS 1  
68.5%  
47.5%  
60%  
Pointed  
EXCELLENT  
EXCELLENT  
NONE  
IGI LG732549533  
Comments: This Laboratory Grown Diamond was created by Chemical Vapor Deposition (CVD) growth process.  
Type IIa