



ELECTRONIC COPY

LG732591128
Report verification at igi.org



September 14, 2025
IGI Report Number **LG732591128**
Description **LABORATORY GROWN DIAMOND**
Shape and Cutting Style **CUSHION MODIFIED BRILLIANT**
Measurements **9.83 X 7.25 X 4.75 MM**
GRADING RESULTS
Carat Weight **2.63 CARATS**
Color Grade **FANCY VIVID GREEN**
Clarity Grade **VVS 2**

LABORATORY GROWN DIAMOND REPORT

September 14, 2025
IGI Report Number **LG732591128**
Description **LABORATORY GROWN DIAMOND**
Shape and Cutting Style **CUSHION MODIFIED BRILLIANT**
Measurements **9.83 X 7.25 X 4.75 MM**

GRADING RESULTS

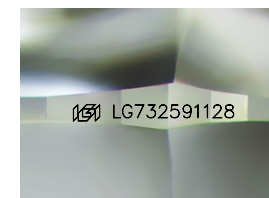
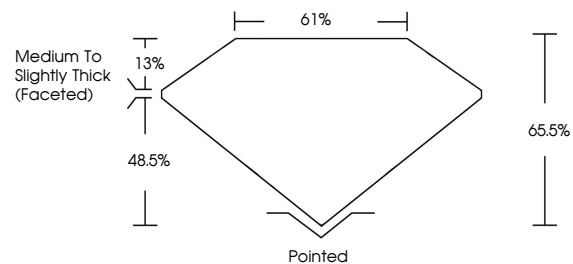
Carat Weight **2.63 CARATS**
Color Grade **FANCY VIVID GREEN**
Clarity Grade **VVS 2**

ADDITIONAL GRADING INFORMATION

Polish **EXCELLENT**
Symmetry **EXCELLENT**
Fluorescence **VERY SLIGHT**
Inscription(s) **IGI LG732591128**

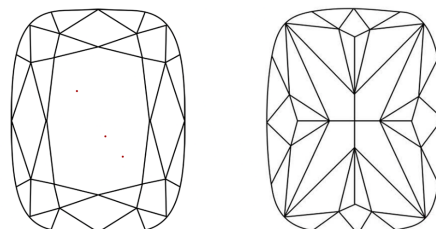
Comments: This Laboratory Grown Diamond was created by Chemical Vapor Deposition (CVD) growth process. Indications of post-growth treatment.

PROPORTIONS



Sample Image Used

CLARITY CHARACTERISTICS



KEY TO SYMBOLS

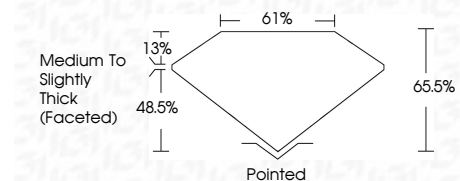
Red symbols indicate internal characteristics.
Green symbols indicate external characteristics.

COLOR

D E F G H I J Faint Very Light Light

CLARITY

IF	VS ¹⁻²	VS ¹⁻²	SI ¹⁻²	I ¹⁻³
Internally Flawless	Very Very Slightly Included	Very Slightly Included	Slightly Included	Included



ADDITIONAL GRADING INFORMATION

Polish **EXCELLENT**
Symmetry **EXCELLENT**
Fluorescence **VERY SLIGHT**
Inscription(s) **IGI LG732591128**
Comments: This Laboratory Grown Diamond was created by Chemical Vapor Deposition (CVD) growth process. Indications of post-growth treatment.



September 14, 2025
IGI Report No LG732591128
CUSHION MODIFIED BRILLIANT
9.83 X 7.25 X 4.75 MM
2.63 CARATS
FANCY VIVID GREEN
VVS 2
65.5%
61%
Medium to Slightly Thick (Faceted)
Pointed
EXCELLENT
EXCELLENT
VERY SLIGHT
IGI LG732591128
Comments: This Laboratory Grown Diamond was created by Chemical Vapor Deposition (CVD) growth process. Indications of post-growth treatment.