



# INTERNATIONAL GEMOLOGICAL INSTITUTE

## LABORATORY GROWN DIAMOND REPORT

September 10, 2025

IGI Report Number

LG733503394

Description

LABORATORY GROWN DIAMOND

Shape and Cutting Style

PRINCESS CUT

Measurements

3.73 X 3.63 X 2.59 MM

### GRADING RESULTS

Carat Weight

0.33 CARAT

Color Grade

D

Clarity Grade

VVS 2

### ADDITIONAL GRADING INFORMATION

Polish

VERY GOOD

Symmetry

GOOD

Fluorescence

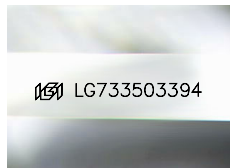
NONE

Inscription(s)

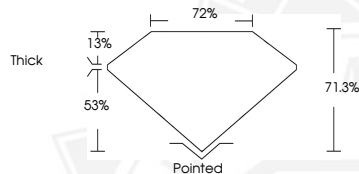
IGI LG733503394

Comments: This Laboratory Grown Diamond was created by Chemical Vapor Deposition (CVD) growth process. Type IIa

ELECTRONIC COPY



Sample Image Used



September 10, 2025

IGI Report Number LG733503394

PRINCESS CUT

LABORATORY GROWN DIAMOND

3.73 X 3.63 X 2.59 MM

Carat Weight 0.33 CARAT

Color Grade D

Clarity Grade VVS 2

Polish VERY GOOD

Symmetry GOOD

Fluorescence NONE

Inscription(s) IGI LG733503394

Comments: This Laboratory Grown Diamond was created by Chemical Vapor Deposition (CVD) growth process. Type IIa



September 10, 2025

IGI Report Number LG733503394

PRINCESS CUT

LABORATORY GROWN DIAMOND

3.73 X 3.63 X 2.59 MM

Carat Weight 0.33 CARAT

Color Grade D

Clarity Grade VVS 2

Polish VERY GOOD

Symmetry GOOD

Fluorescence NONE

Inscription(s) IGI LG733503394

Comments: This Laboratory Grown Diamond was created by Chemical Vapor Deposition (CVD) growth process. Type IIa



THIS DOCUMENT WAS PRODUCED WITH THE FOLLOWING SECURITY MEASURES: SPECIAL DOCUMENT PAPER, INK SCREENS, WATERMARK, BACKGROUND DESIGNS, HOLOGRAM AND OTHER SECURITY FEATURES NOT LISTED AND DO EXCEED DOCUMENT SECURITY INDUSTRY GUIDELINES.

For terms & conditions and to verify this report, please visit [www.igi.org](http://www.igi.org)