



**ELECTRONIC COPY**

**LABORATORY GROWN DIAMOND REPORT**

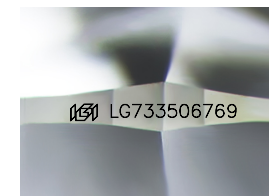
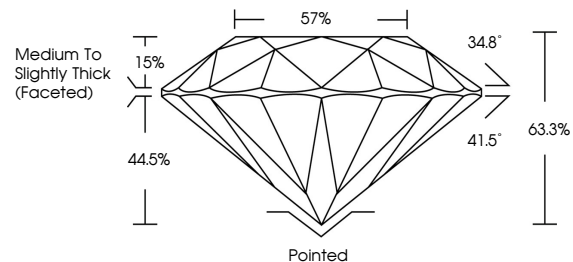
September 10, 2025  
 IGI Report Number **LG733506769**  
 Description **LABORATORY GROWN DIAMOND**  
 Shape and Cutting Style **ROUND BRILLIANT**  
 Measurements **8.77 - 8.80 X 5.57 MM**  
**GRADING RESULTS**  
 Carat Weight **2.66 CARATS**  
 Color Grade **G**  
 Clarity Grade **VVS 2**  
 Cut Grade **EXCELLENT**

**ADDITIONAL GRADING INFORMATION**

Polish **EXCELLENT**  
 Symmetry **EXCELLENT**  
 Fluorescence **NONE**  
 Inscription(s) **IGI LG733506769**

Comments: This Laboratory Grown Diamond was created by Chemical Vapor Deposition (CVD) growth process. Type IIa

**PROPORTIONS**



Sample Image Used

**COLOR**

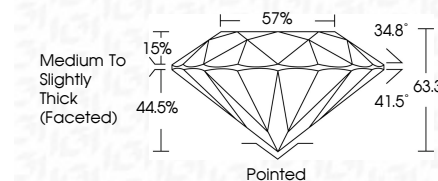
D E F G H I J Faint Very Light Light

**CLARITY**

IF	VS <sup>1-2</sup>	VS <sup>1-2</sup>	SI <sup>1-2</sup>	I <sup>1-3</sup>
Internally Flawless	Very Very Slightly Included	Very Slightly Included	Slightly Included	Included



September 10, 2025  
 IGI Report Number **LG733506769**  
 Description **LABORATORY GROWN DIAMOND**  
 Shape and Cutting Style **ROUND BRILLIANT**  
 Measurements **8.77 - 8.80 X 5.57 MM**  
**GRADING RESULTS**  
 Carat Weight **2.66 CARATS**  
 Color Grade **G**  
 Clarity Grade **VVS 2**  
 Cut Grade **EXCELLENT**



**ADDITIONAL GRADING INFORMATION**

Polish **EXCELLENT**  
 Symmetry **EXCELLENT**  
 Fluorescence **NONE**  
 Inscription(s) **IGI LG733506769**  
 Comments: This Laboratory Grown Diamond was created by Chemical Vapor Deposition (CVD) growth process. Type IIa



September 10, 2025  
 IGI Report No LG733506769  
**ROUND BRILLIANT**  
**8.77 - 8.80 X 5.57 MM**  
 Carat Weight **2.66 CARATS**  
 Color Grade **G**  
 Clarity Grade **VVS 2**  
 Cut Grade **EXCELLENT**  
 Depth **63.3%**  
 Table **15%**  
 Girdle **Medium To Slightly Thick (Faceted)**  
 Crown Angle **34.8°**  
 Pavilion Angle **41.5°**  
 Culet **Pointed**  
 Polish **EXCELLENT**  
 Symmetry **EXCELLENT**  
 Fluorescence **NONE**  
 Inscription(s) **IGI LG733506769**  
 Comments: This Laboratory Grown Diamond was created by Chemical Vapor Deposition (CVD) growth process. Type IIa