



ELECTRONIC COPY

LG733507215
Report verification at igi.org



September 10, 2025
IGI Report Number **LG733507215**
Description **LABORATORY GROWN DIAMOND**
Shape and Cutting Style **PRINCESS CUT**
Measurements **10.84 X 10.73 X 7.54 MM**
GRADING RESULTS
Carat Weight **8.10 CARATS**
Color Grade **G**
Clarity Grade **VS 1**

LABORATORY GROWN DIAMOND REPORT

September 10, 2025
IGI Report Number **LG733507215**
Description **LABORATORY GROWN DIAMOND**
Shape and Cutting Style **PRINCESS CUT**
Measurements **10.84 X 10.73 X 7.54 MM**

GRADING RESULTS

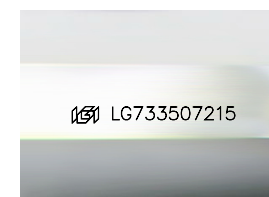
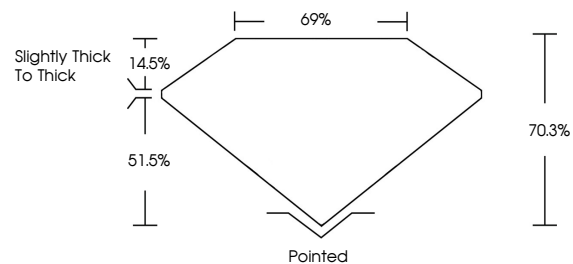
Carat Weight **8.10 CARATS**
Color Grade **G**
Clarity Grade **VS 1**

ADDITIONAL GRADING INFORMATION

Polish **EXCELLENT**
Symmetry **EXCELLENT**
Fluorescence **NONE**
Inscription(s) **IGI LG733507215**

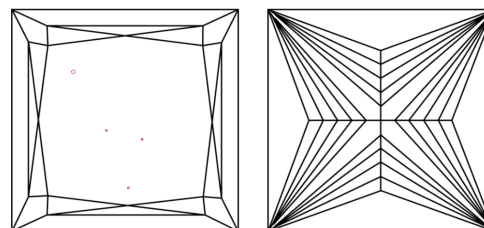
Comments: This Laboratory Grown Diamond was created by Chemical Vapor Deposition (CVD) growth process.
Type IIa

PROPORTIONS



Sample Image Used

CLARITY CHARACTERISTICS



KEY TO SYMBOLS

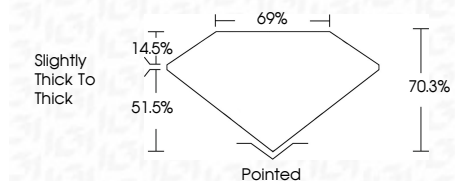
Red symbols indicate internal characteristics.
Green symbols indicate external characteristics.

COLOR

D E F G H I J Faint Very Light Light

CLARITY

IF	VS ¹⁻²	VS ¹⁻²	SI ¹⁻²	I ¹⁻³
Internally Flawless	Very Very Slightly Included	Very Slightly Included	Slightly Included	Included



ADDITIONAL GRADING INFORMATION

Polish **EXCELLENT**
Symmetry **EXCELLENT**
Fluorescence **NONE**
Inscription(s) **IGI LG733507215**
Comments: This Laboratory Grown Diamond was created by Chemical Vapor Deposition (CVD) growth process.
Type IIa



September 10, 2025
IGI Report No LG733507215
PRINCESS CUT
10.84 X 10.73 X 7.54 MM
8.10 CARATS
Color Grade **G**
Clarity Grade **VS 1**
Table **70.3%**
Girdle **69%**
Slightly Thick To Thick
Culet **Pointed**
Polish **EXCELLENT**
Symmetry **EXCELLENT**
Fluorescence **NONE**
Inscription(s) **IGI LG733507215**
Comments: This Laboratory Grown Diamond was created by Chemical Vapor Deposition (CVD) growth process.
Type IIa