



ELECTRONIC COPY

LG733514480
Report verification at igi.org



September 29, 2025

IGI Report Number **LG733514480**

Description **LABORATORY GROWN DIAMOND**

Shape and Cutting Style **PRINCESS CUT**

Measurements **7.63 X 7.51 X 5.30 MM**

GRADING RESULTS

Carat Weight **2.61 CARATS**

Color Grade **D**

Clarity Grade **VVS 2**

September 29, 2025
IGI Report Number **LG733514480**
Description **LABORATORY GROWN DIAMOND**
Shape and Cutting Style **PRINCESS CUT**
Measurements **7.63 X 7.51 X 5.30 MM**

GRADING RESULTS

Carat Weight **2.61 CARATS**

Color Grade **D**

Clarity Grade **VVS 2**

ADDITIONAL GRADING INFORMATION

Polish **EXCELLENT**

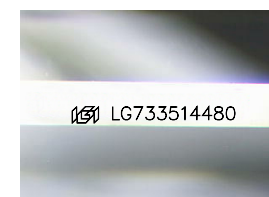
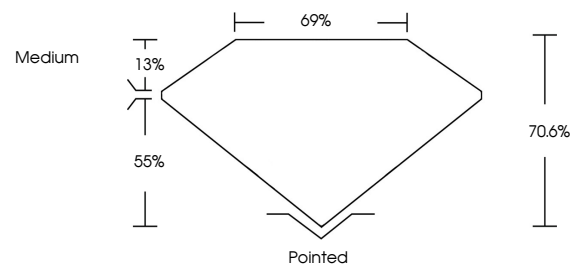
Symmetry **EXCELLENT**

Fluorescence **NONE**

Inscription(s) **IGI LG733514480**

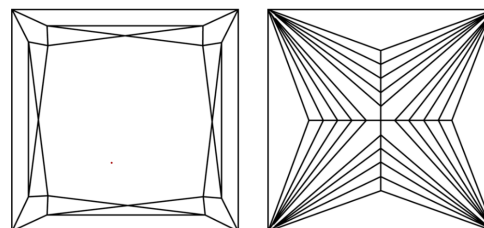
Comments: This Laboratory Grown Diamond was created by Chemical Vapor Deposition (CVD) growth process. Type IIa

PROPORTIONS



Sample Image Used

CLARITY CHARACTERISTICS



KEY TO SYMBOLS

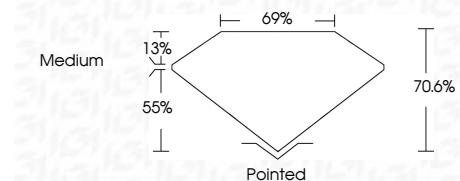
Red symbols indicate internal characteristics.
Green symbols indicate external characteristics.

COLOR

D E F G H I J Faint Very Light Light

CLARITY

FL	IF	VVS ¹⁻²	VS ¹⁻²	SI ¹⁻²	I ¹⁻³
Flawless	Internally Flawless	Very Very Slightly Included	Very Slightly Included	Slightly Included	Included



ADDITIONAL GRADING INFORMATION

Polish **EXCELLENT**

Symmetry **EXCELLENT**

Fluorescence **NONE**

Inscription(s) **IGI LG733514480**

Comments: This Laboratory Grown Diamond was created by Chemical Vapor Deposition (CVD) growth process. Type IIa



September 29, 2025
IGI Report No LG733514480
PRINCESS CUT
7.63 X 7.51 X 5.30 MM
2.61 CARATS
D
VVS 2
70.6%
69%
Medium
Pointed
EXCELLENT
EXCELLENT
NONE
IGI LG733514480
Comments: This Laboratory Grown Diamond was created by Chemical Vapor Deposition (CVD) growth process. Type IIa