



ELECTRONIC COPY

LG733516075
Report verification at igi.org



September 23, 2025

IGI Report Number LG733516075

Description LABORATORY GROWN DIAMOND

Shape and Cutting Style CUT CORNERED RECTANGULAR MODIFIED BRILLIANT

Measurements 8.77 X 6.39 X 4.06 MM

GRADING RESULTS

Carat Weight 2.01 CARATS

Color Grade D

Clarity Grade VVS 1

LABORATORY GROWN DIAMOND REPORT

September 23, 2025

IGI Report Number LG733516075

Description LABORATORY GROWN DIAMOND

Shape and Cutting Style CUT CORNERED RECTANGULAR MODIFIED BRILLIANT

Measurements 8.77 X 6.39 X 4.06 MM

GRADING RESULTS

Carat Weight 2.01 CARATS

Color Grade D

Clarity Grade VVS 1

ADDITIONAL GRADING INFORMATION

Polish EXCELLENT

Symmetry EXCELLENT

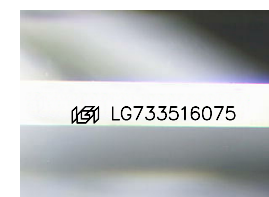
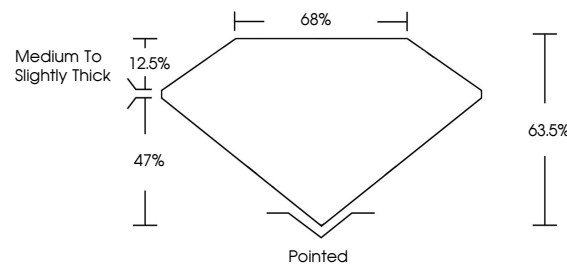
Fluorescence NONE

Inscription(s) LG733516075

Comments: As Grown - No indication of post-growth treatment.

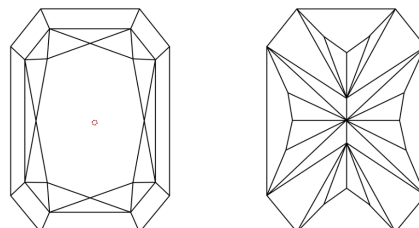
This Laboratory Grown Diamond was created by High Pressure High Temperature (HPHT) growth process. Type II

PROPORTIONS



Sample Image Used

CLARITY CHARACTERISTICS



KEY TO SYMBOLS

Red symbols indicate internal characteristics. Green symbols indicate external characteristics.

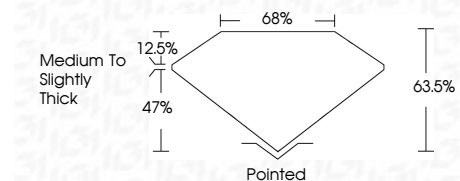
COLOR

D E F G H I J Faint Very Light Light

CLARITY

IF VS 1-2 VS 1-2 SI 1-2 I 1-3

Internally Flawless Very Very Slightly Included Very Slightly Included Slightly Included Included



ADDITIONAL GRADING INFORMATION

Polish EXCELLENT

Symmetry EXCELLENT

Fluorescence NONE

Inscription(s) LG733516075

Comments: As Grown - No indication of post-growth treatment.

This Laboratory Grown Diamond was created by High Pressure High Temperature (HPHT) growth process. Type II



IGI



Summary of report details including date, report number, description, measurements, grading results, and additional information.