



**ELECTRONIC COPY**

LG733531961  
Report verification at igi.org



September 29, 2025

IGI Report Number **LG733531961**

Description **LABORATORY GROWN DIAMOND**

Shape and Cutting Style **CUSHION MODIFIED BRILLIANT**

Measurements **10.90 X 8.65 X 5.89 MM**

**GRADING RESULTS**

Carat Weight **4.09 CARATS**

Color Grade **F**

Clarity Grade **VVS 2**

Cut Grade **VERY GOOD**

September 29, 2025  
IGI Report Number **LG733531961**  
Description **LABORATORY GROWN DIAMOND**  
Shape and Cutting Style **CUSHION MODIFIED BRILLIANT**  
Measurements **10.90 X 8.65 X 5.89 MM**

**GRADING RESULTS**

Carat Weight **4.09 CARATS**

Color Grade **F**

Clarity Grade **VVS 2**

Cut Grade **VERY GOOD**

**ADDITIONAL GRADING INFORMATION**

Polish **EXCELLENT**

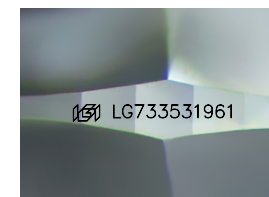
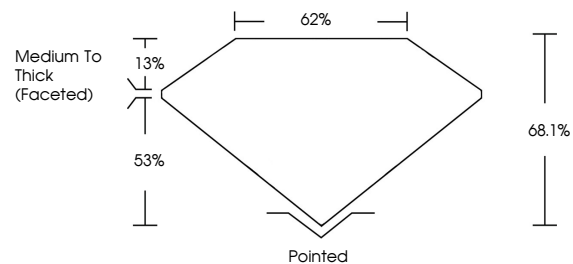
Symmetry **VERY GOOD**

Fluorescence **NONE**

Inscription(s) **LG733531961**

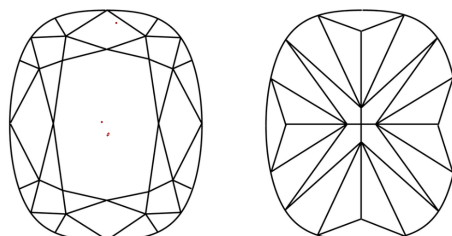
Comments: This Laboratory Grown Diamond was created by Chemical Vapor Deposition (CVD) growth process.  
Type IIa

**PROPORTIONS**



Sample Image Used

**CLARITY CHARACTERISTICS**



**KEY TO SYMBOLS**

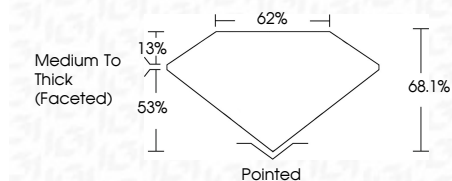
Red symbols indicate internal characteristics.  
Green symbols indicate external characteristics.

**COLOR**

D E F G H I J Faint Very Light Light

**CLARITY**

FL	IF	VVS <sup>1-2</sup>	VS <sup>1-2</sup>	SI <sup>1-2</sup>	I <sup>1-3</sup>
Flawless	Internally Flawless	Very Very Slightly Included	Very Slightly Included	Slightly Included	Included



**ADDITIONAL GRADING INFORMATION**

Polish **EXCELLENT**

Symmetry **VERY GOOD**

Fluorescence **NONE**

Inscription(s) **LG733531961**

Comments: This Laboratory Grown Diamond was created by Chemical Vapor Deposition (CVD) growth process.  
Type IIa



**IGI**



September 29, 2025  
IGI Report No LG733531961  
**CUSHION MODIFIED BRILLIANT**  
**4.09 CARATS**  
F  
Color Grade  
**VVS 2**  
VERY GOOD  
Depth 68.1%  
Table 62%  
Girdle Medium To Thick (Faceted)  
Culet Pointed  
Polish EXCELLENT  
Symmetry VERY GOOD  
Fluorescence NONE  
Inscription(s) LG733531961  
Comments: This Laboratory Grown Diamond was created by Chemical Vapor Deposition (CVD) growth process.  
Type IIa