



ELECTRONIC COPY

LG733533446
Report verification at igi.org



September 29, 2025

IGI Report Number **LG733533446**

Description **LABORATORY GROWN DIAMOND**

Shape and Cutting Style **CUSHION MODIFIED BRILLIANT**

Measurements **10.76 X 8.61 X 5.85 MM**

GRADING RESULTS

Carat Weight **4.09 CARATS**

Color Grade **F**

Clarity Grade **VS 1**

Cut Grade **VERY GOOD**

LABORATORY GROWN DIAMOND REPORT

September 29, 2025

IGI Report Number **LG733533446**

Description **LABORATORY GROWN DIAMOND**

Shape and Cutting Style **CUSHION MODIFIED BRILLIANT**

Measurements **10.76 X 8.61 X 5.85 MM**

GRADING RESULTS

Carat Weight **4.09 CARATS**

Color Grade **F**

Clarity Grade **VS 1**

Cut Grade **VERY GOOD**

ADDITIONAL GRADING INFORMATION

Polish **EXCELLENT**

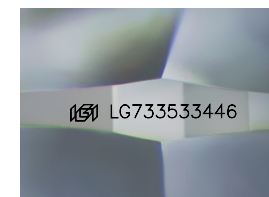
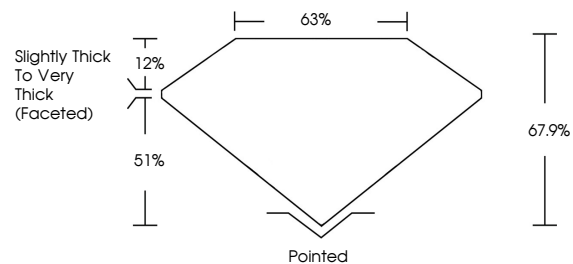
Symmetry **EXCELLENT**

Fluorescence **NONE**

Inscription(s) **LG733533446**

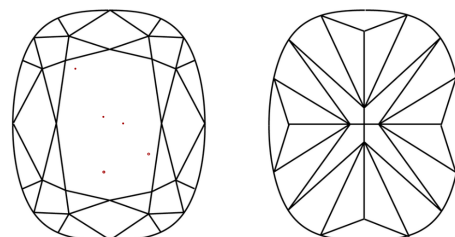
Comments: This Laboratory Grown Diamond was created by Chemical Vapor Deposition (CVD) growth process. Type IIa

PROPORTIONS



Sample Image Used

CLARITY CHARACTERISTICS



KEY TO SYMBOLS

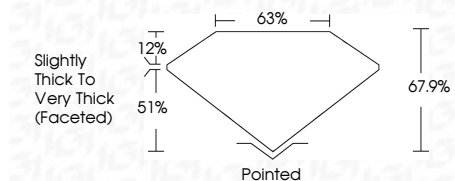
Red symbols indicate internal characteristics.
Green symbols indicate external characteristics.

COLOR

D E F G H I J Faint Very Light Light

CLARITY

| FL | IF | VS ¹⁻² | VS ¹⁻² | SI ¹⁻² | I ¹⁻³ |
|----------|---------------------|-----------------------------|------------------------|-------------------|------------------|
| Flawless | Internally Flawless | Very Very Slightly Included | Very Slightly Included | Slightly Included | Included |



ADDITIONAL GRADING INFORMATION

Polish **EXCELLENT**

Symmetry **EXCELLENT**

Fluorescence **NONE**

Inscription(s) **LG733533446**

Comments: This Laboratory Grown Diamond was created by Chemical Vapor Deposition (CVD) growth process. Type IIa



IGI



September 29, 2025
IGI Report No LG733533446
CUSHION MODIFIED BRILLIANT
10.76 X 8.61 X 5.85 MM
4.09 CARATS
F
Color Grade
VS 1
VERY GOOD
67.9%
68%
Slightly Thick to Very Thick (Faceted)
Pointed
EXCELLENT
EXCELLENT
NONE
NONE
Inscription(s)
 LG733533446
Comments: This Laboratory Grown Diamond was created by Chemical Vapor Deposition (CVD) growth process. Type IIa