



**ELECTRONIC COPY**

LG733534070  
Report verification at igi.org



September 10, 2025

IGI Report Number **LG733534070**

Description **LABORATORY GROWN DIAMOND**

Shape and Cutting Style **PRINCESS CUT**

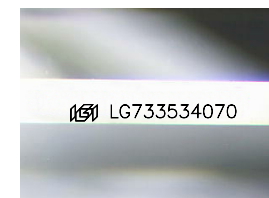
Measurements **7.01 X 6.89 X 5.08 MM**

**GRADING RESULTS**

Carat Weight **2.06 CARATS**

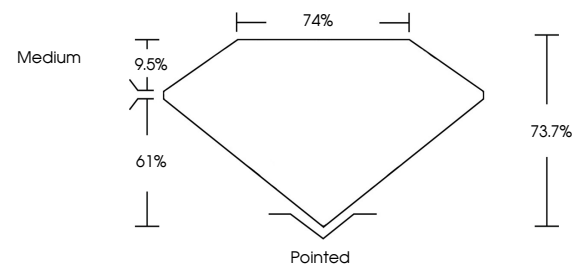
Color Grade **E**

Clarity Grade **VVS 2**

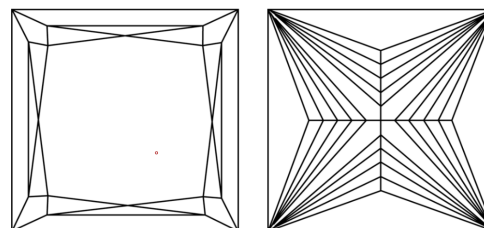


Sample Image Used

**PROPORTIONS**



**CLARITY CHARACTERISTICS**



**KEY TO SYMBOLS**

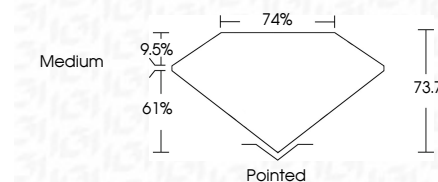
Red symbols indicate internal characteristics.  
Green symbols indicate external characteristics.

**COLOR**

D E F G H I J Faint Very Light Light

**CLARITY**

FL	IF	VVS <sup>1-2</sup>	VS <sup>1-2</sup>	SI <sup>1-2</sup>	I <sup>1-3</sup>
Flawless	Internally Flawless	Very Very Slightly Included	Very Slightly Included	Slightly Included	Included



**ADDITIONAL GRADING INFORMATION**

Polish **EXCELLENT**

Symmetry **EXCELLENT**

Fluorescence **NONE**

Inscription(s) **IGI LG733534070**

Comments: This Laboratory Grown Diamond was created by Chemical Vapor Deposition (CVD) growth process. Type IIa



**IGI**



September 10, 2025	2.06 CARATS	E	VVS 2	73.7%	74%	Medium	Pointed
IGI Report No LG733534070	7.01 X 6.89 X 5.08 MM	PRINCESS CUT	EXCELLENT	EXCELLENT	NONE	IGI LG733534070	
Carat Weight	Color Grade	Clarity Grade	Depth	Table	Graile	Culet	Polish
Symmetry	Fluorescence	Inscription(s)					

Comments: This Laboratory Grown Diamond was created by Chemical Vapor Deposition (CVD) growth process. Type IIa