



ELECTRONIC COPY

LG733539376
Report verification at igi.org



September 15, 2025

IGI Report Number **LG733539376**

Description **LABORATORY GROWN DIAMOND**

Shape and Cutting Style **ROUND BRILLIANT**

Measurements **7.37 - 7.43 X 4.53 MM**

GRADING RESULTS

Carat Weight **1.54 CARAT**

Color Grade **FANCY INTENSE PINK**

Clarity Grade **VS 1**

Cut Grade **IDEAL**

September 15, 2025
IGI Report Number **LG733539376**
Description **LABORATORY GROWN DIAMOND**
Shape and Cutting Style **ROUND BRILLIANT**
Measurements **7.37 - 7.43 X 4.53 MM**

GRADING RESULTS

Carat Weight **1.54 CARAT**

Color Grade **FANCY INTENSE PINK**

Clarity Grade **VS 1**

Cut Grade **IDEAL**

ADDITIONAL GRADING INFORMATION

Polish **EXCELLENT**

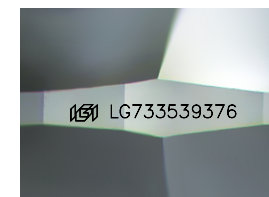
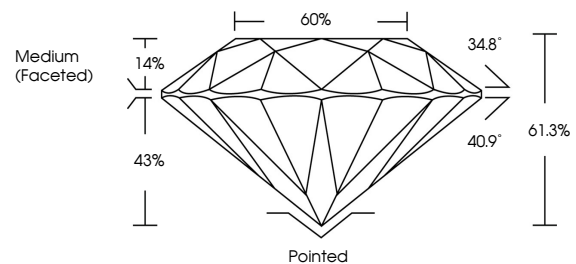
Symmetry **EXCELLENT**

Fluorescence **STRONG**

Inscription(s) **LG733539376**

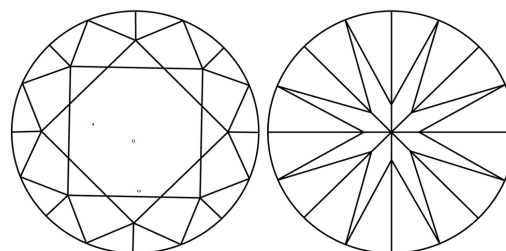
Comments: This Laboratory Grown Diamond was created by Chemical Vapor Deposition (CVD) growth process.
Indications of post-growth treatment.

PROPORTIONS



Sample Image Used

CLARITY CHARACTERISTICS



KEY TO SYMBOLS

Red symbols indicate internal characteristics.
Green symbols indicate external characteristics.

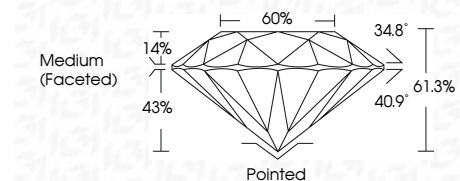
COLOR

D E F G H I J Faint Very Light Light

CLARITY

IF WS¹⁻² VS¹⁻² SI¹⁻² I¹⁻³

Internally Flawless Very Very Slightly Included Very Slightly Included Slightly Included Included



ADDITIONAL GRADING INFORMATION

Polish **EXCELLENT**

Symmetry **EXCELLENT**

Fluorescence **STRONG**

Inscription(s) **LG733539376**

Comments: This Laboratory Grown Diamond was created by Chemical Vapor Deposition (CVD) growth process.
Indications of post-growth treatment.



September 15, 2025	1.54 CARAT	Pointed
IGI Report No LG733539376	FANCY INTENSE PINK	EXCELLENT
ROUND BRILLIANT	VS 1	EXCELLENT
7.37 - 7.43 X 4.53 MM	IDEAL	EXCELLENT
Carat Weight	61.3%	STRONG
Color Grade	Medium (Faceted)	STRONG
Clarity Grade		STRONG
Cut Grade		STRONG
Depth		STRONG
Table		STRONG
Girdle		STRONG
Polish		STRONG
Symmetry		STRONG
Fluorescence		STRONG
Inscription(s)		STRONG
Comments: This Laboratory Grown Diamond was created by Chemical Vapor Deposition (CVD) growth process. Indications of post-growth treatment.		