



ELECTRONIC COPY

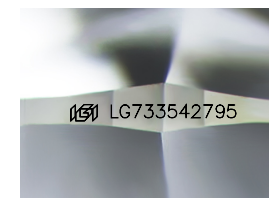
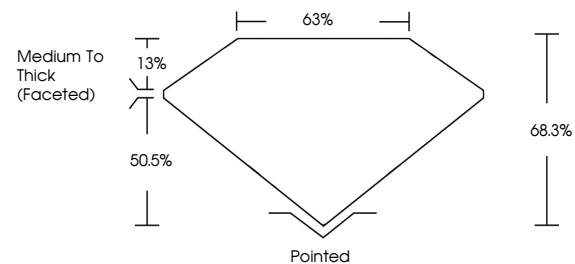
LG733542795
Report verification at igi.org



October 6, 2025
IGI Report Number **LG733542795**
Description **LABORATORY GROWN DIAMOND**
Shape and Cutting Style **CUSHION MODIFIED BRILLIANT**
Measurements **11.52 X 8.89 X 6.07 MM**
GRADING RESULTS
Carat Weight **5.28 CARATS**
Color Grade **F**
Clarity Grade **VS 2**

October 6, 2025
IGI Report Number **LG733542795**
Description **LABORATORY GROWN DIAMOND**
Shape and Cutting Style **CUSHION MODIFIED BRILLIANT**
Measurements **11.52 X 8.89 X 6.07 MM**

PROPORTIONS

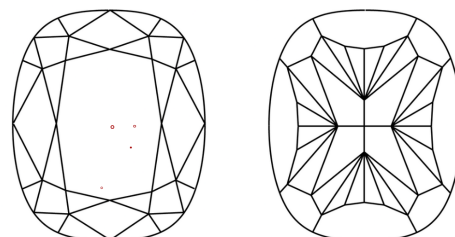


Sample Image Used

GRADING RESULTS

Carat Weight **5.28 CARATS**
Color Grade **F**
Clarity Grade **VS 2**

CLARITY CHARACTERISTICS



KEY TO SYMBOLS

Red symbols indicate internal characteristics.
Green symbols indicate external characteristics.

ADDITIONAL GRADING INFORMATION

Polish **EXCELLENT**
Symmetry **EXCELLENT**
Fluorescence **NONE**
Inscription(s) **IGI LG733542795**

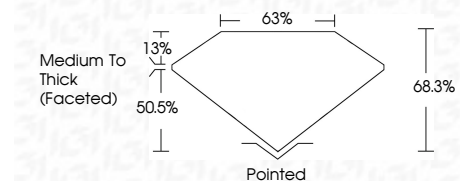
Comments: This Laboratory Grown Diamond was created by Chemical Vapor Deposition (CVD) growth process.
Type IIa

COLOR

D E F G H I J Faint Very Light Light

CLARITY

FL	IF	VS ¹⁻²	VS ¹⁻²	SI ¹⁻²	I ¹⁻³
Flawless	Internally Flawless	Very Very Slightly Included	Very Slightly Included	Slightly Included	Included



ADDITIONAL GRADING INFORMATION

Polish **EXCELLENT**
Symmetry **EXCELLENT**
Fluorescence **NONE**
Inscription(s) **IGI LG733542795**
Comments: This Laboratory Grown Diamond was created by Chemical Vapor Deposition (CVD) growth process.
Type IIa



October 6, 2025
IGI Report No LG733542795
CUSHION MODIFIED BRILLIANT
11.52 X 8.89 X 6.07 MM
5.28 CARATS
F
VS 2
68.3%
63%
Medium To Thick (Faceted)
Pointed
EXCELLENT
EXCELLENT
NONE
IGI LG733542795
Comments: This Laboratory Grown Diamond was created by Chemical Vapor Deposition (CVD) growth process.
Type IIa