



ELECTRONIC COPY

LG733543849
Report verification at igi.org



November 19, 2025
IGI Report Number **LG733543849**
Description **LABORATORY GROWN DIAMOND**
Shape and Cutting Style **CUSHION MODIFIED BRILLIANT**
Measurements **11.89 X 9.27 X 6.34 MM**
GRADING RESULTS
Carat Weight **6.01 CARATS**
Color Grade **G**
Clarity Grade **VS 2**

LABORATORY GROWN DIAMOND REPORT

November 19, 2025
IGI Report Number **LG733543849**
Description **LABORATORY GROWN DIAMOND**
Shape and Cutting Style **CUSHION MODIFIED BRILLIANT**
Measurements **11.89 X 9.27 X 6.34 MM**

GRADING RESULTS

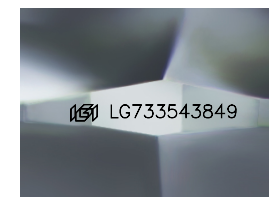
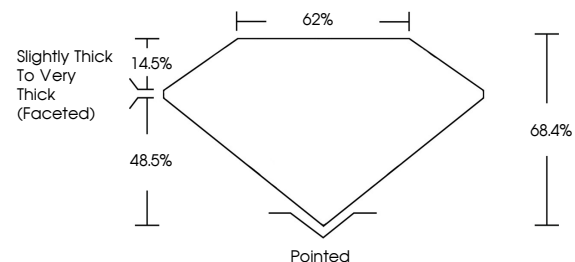
Carat Weight **6.01 CARATS**
Color Grade **G**
Clarity Grade **VS 2**

ADDITIONAL GRADING INFORMATION

Polish **VERY GOOD**
Symmetry **VERY GOOD**
Fluorescence **NONE**
Inscription(s) **IGI LG733543849**

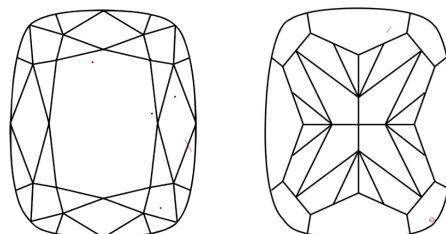
Comments: This Laboratory Grown Diamond was created by Chemical Vapor Deposition (CVD) growth process.
Type IIa

PROPORTIONS



Sample Image Used

CLARITY CHARACTERISTICS



KEY TO SYMBOLS

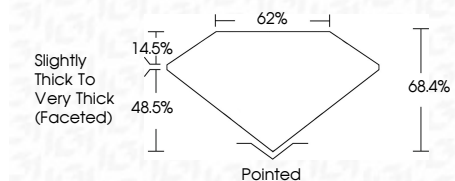
Red symbols indicate internal characteristics.
Green symbols indicate external characteristics.

COLOR

D E F G H I J Faint Very Light Light

CLARITY

FL	IF	VS ¹⁻²	VVS ¹⁻²	S ¹⁻²	I ¹⁻³
Flawless	Internally Flawless	Very Very Slightly Included	Very Slightly Included	Slightly Included	Included



ADDITIONAL GRADING INFORMATION

Polish **VERY GOOD**
Symmetry **VERY GOOD**
Fluorescence **NONE**
Inscription(s) **IGI LG733543849**
Comments: This Laboratory Grown Diamond was created by Chemical Vapor Deposition (CVD) growth process.
Type IIa



November 19, 2025
IGI Report No LG733543849
CUSHION MODIFIED BRILLIANT
11.89 X 9.27 X 6.34 MM
Carat Weight **6.01 CARATS**
Color Grade **G**
Clarity Grade **VS 2**
Depth **68.4%**
Table **62%**
Girdle **Slightly Thick To Very Thick (Faceted)**
Culet **Pointed**
Polish **VERY GOOD**
Symmetry **VERY GOOD**
Fluorescence **NONE**
Inscription(s) **IGI LG733543849**
Comments: This Laboratory Grown Diamond was created by Chemical Vapor Deposition (CVD) growth process.
Type IIa