



LABORATORY GROWN DIAMOND REPORT

November 22, 2025
 IGI Report Number **LG733544068**
 Description **LABORATORY GROWN DIAMOND**
 Shape and Cutting Style **HEART BRILLIANT**
 Measurements **6.25 X 6.67 X 4.05 MM**

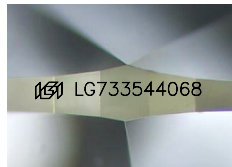
GRADING RESULTS

Carat Weight **0.96 CARAT**
 Color Grade **E**
 Clarity Grade **SI 1**

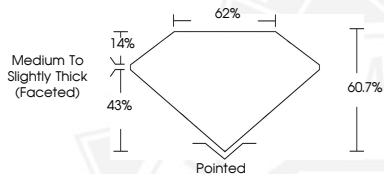
ADDITIONAL GRADING INFORMATION

Polish **EXCELLENT**
 Symmetry **EXCELLENT**
 Fluorescence **NONE**
 Inscription(s) **IGI LG733544068**

Comments: This Laboratory Grown Diamond was created by
 Chemical Vapor Deposition (CVD) growth process.
 Type IIa



Sample Image Used



November 22, 2025
 IGI Report Number **LG733544068**
HEART BRILLIANT
LABORATORY GROWN DIAMOND
6.25 X 6.67 X 4.05 MM
 Carat Weight **0.96 CARAT**
 Color Grade **E**
 Clarity Grade **SI 1**
 Polish **EXCELLENT**
 Symmetry **EXCELLENT**
 Fluorescence **NONE**
 Inscription(s) **IGI LG733544068**

Comments: This Laboratory Grown
 Diamond was created by
 Chemical Vapor Deposition (CVD)
 growth process. Type IIa



November 22, 2025
 IGI Report Number **LG733544068**
HEART BRILLIANT
LABORATORY GROWN DIAMOND
6.25 X 6.67 X 4.05 MM
 Carat Weight **0.96 CARAT**
 Color Grade **E**
 Clarity Grade **SI 1**
 Polish **EXCELLENT**
 Symmetry **EXCELLENT**
 Fluorescence **NONE**
 Inscription(s) **IGI LG733544068**

Comments: This Laboratory Grown
 Diamond was created by
 Chemical Vapor Deposition (CVD)
 growth process. Type IIa



THIS DOCUMENT WAS PRODUCED WITH THE FOLLOWING SECURITY MEASURES: SPECIAL DOCUMENT PAPER, INK SCREENS, WATERMARK, BACKGROUND DESIGNS, HOLOGRAM AND OTHER SECURITY FEATURES NOT LISTED AND DO EXCEED DOCUMENT SECURITY INDUSTRY GUIDELINES.