



ELECTRONIC COPY

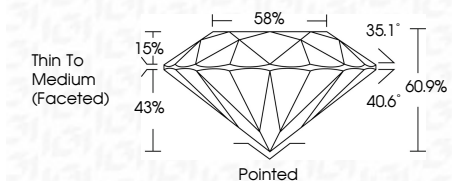
LG733545207 Report verification at igi.org



December 22, 2025 IGI Report Number LG733545207 Description LABORATORY GROWN DIAMOND Shape and Cutting Style ROUND BRILLIANT Measurements 8.76 - 8.80 X 5.35 MM

GRADING RESULTS

Carat Weight 2.52 CARATS Color Grade F Clarity Grade VS 1 Cut Grade IDEAL



ADDITIONAL GRADING INFORMATION

Polish EXCELLENT Symmetry EXCELLENT Fluorescence NONE Inscription(s) IGI LG733545207 Comments: This Laboratory Grown Diamond was created by Chemical Vapor Deposition (CVD) growth process. Type IIa



December 22, 2025 IGI Report No LG733545207 ROUND BRILLIANT 8.76 - 8.80 X 5.35 MM 2.52 CARATS F VS 1 IDEAL 60.9% 58% Thin To Medium (Faceted) Pointed EXCELLENT EXCELLENT NONE IGI LG733545207 Comments: This Laboratory Grown Diamond was created by Chemical Vapor Deposition (CVD) growth process. Type IIa

LABORATORY GROWN DIAMOND REPORT

December 22, 2025 IGI Report Number LG733545207 Description LABORATORY GROWN DIAMOND Shape and Cutting Style ROUND BRILLIANT Measurements 8.76 - 8.80 X 5.35 MM

GRADING RESULTS

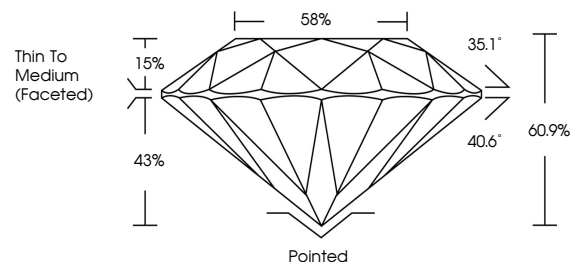
Carat Weight 2.52 CARATS Color Grade F Clarity Grade VS 1 Cut Grade IDEAL

ADDITIONAL GRADING INFORMATION

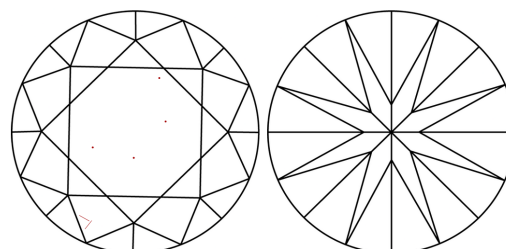
Polish EXCELLENT Symmetry EXCELLENT Fluorescence NONE Inscription(s) IGI LG733545207

Comments: This Laboratory Grown Diamond was created by Chemical Vapor Deposition (CVD) growth process. Type IIa

PROPORTIONS

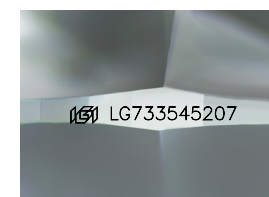


CLARITY CHARACTERISTICS



KEY TO SYMBOLS

Red symbols indicate internal characteristics. Green symbols indicate external characteristics.



Sample Image Used

COLOR

D E F G H I J Faint Very Light Light

CLARITY

FL IF VS 1-2 VS 2-3 SI 1-2 I 1-3 Flawless Internally Flawless Very Very Slightly Included Very Slightly Included Slightly Included Included

