



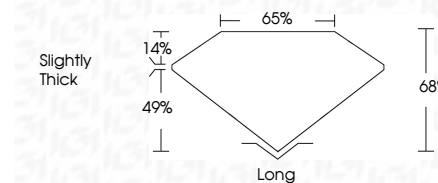
**ELECTRONIC COPY**

LG733545721  
Report verification at igi.org



September 24, 2025  
IGI Report Number **LG733545721**  
Description **LABORATORY GROWN DIAMOND**  
Shape and Cutting Style **EMERALD CUT**  
Measurements **8.76 X 5.88 X 4.00 MM**

**GRADING RESULTS**  
Carat Weight **2.12 CARATS**  
Color Grade **E**  
Clarity Grade **VVS 2**

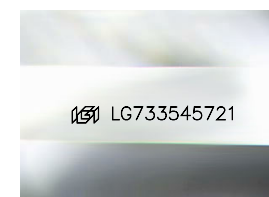


**ADDITIONAL GRADING INFORMATION**  
Polish **EXCELLENT**  
Symmetry **EXCELLENT**  
Fluorescence **NONE**  
Inscription(s) **IGI LG733545721**  
Comments: This Laboratory Grown Diamond was created by Chemical Vapor Deposition (CVD) growth process. Type IIa



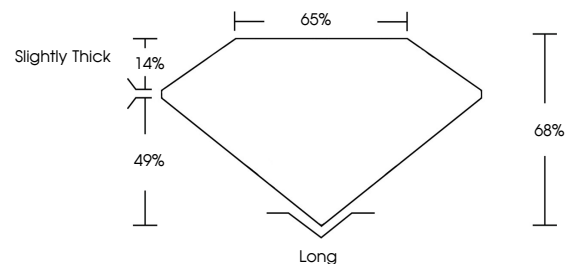
September 24, 2025  
IGI Report No LG733545721  
**EMERALD CUT**  
2.12 CARATS  
E  
8.76 X 5.88 X 4.00 MM  
Carat Weight  
Color Grade  
VVS 2  
Clarity Grade  
68%  
Depth  
65%  
Table  
Slightly Thick  
Grades  
Long  
Culet  
EXCELLENT  
Polish  
EXCELLENT  
Symmetry  
NONE  
Fluorescence  
Inscription(s)  
IGI LG733545721

Comments: This Laboratory Grown Diamond was created by Chemical Vapor Deposition (CVD) growth process. Type IIa

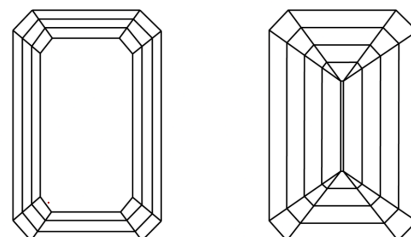


Sample Image Used

**PROPORTIONS**



**CLARITY CHARACTERISTICS**



**KEY TO SYMBOLS**

Red symbols indicate internal characteristics.  
Green symbols indicate external characteristics.

**COLOR**

D E F G H I J Faint Very Light Light

**CLARITY**

FL	IF	VVS <sup>1-2</sup>	VS <sup>1-2</sup>	SI <sup>1-2</sup>	I <sup>1-3</sup>
Flawless	Internally Flawless	Very Very Slightly Included	Very Slightly Included	Slightly Included	Included

