



ELECTRONIC COPY

LABORATORY GROWN DIAMOND REPORT

October 3, 2025  
IGI Report Number LG733547001  
Description LABORATORY GROWN DIAMOND  
Shape and Cutting Style CUT CORNERED RECTANGULAR MODIFIED BRILLIANT  
Measurements 8.92 X 5.75 X 3.57 MM

GRADING RESULTS

Carat Weight 1.61 CARAT  
Color Grade G  
Clarity Grade SI 1

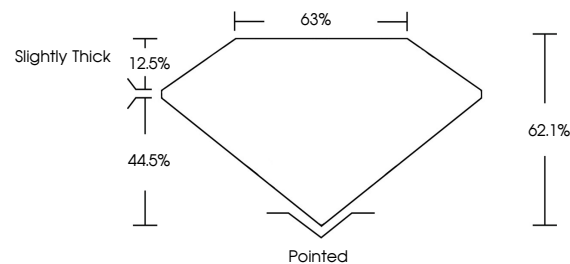
ADDITIONAL GRADING INFORMATION

Polish EXCELLENT  
Symmetry EXCELLENT  
Fluorescence NONE

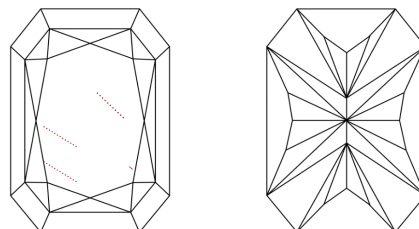
Inscription(s) LG733547001

Comments: This Laboratory Grown Diamond was created by Chemical Vapor Deposition (CVD) growth process.  
Type IIa

PROPORTIONS

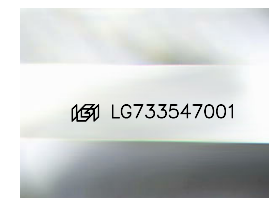


CLARITY CHARACTERISTICS



KEY TO SYMBOLS

Red symbols indicate internal characteristics.  
Green symbols indicate external characteristics.



Sample Image Used

COLOR

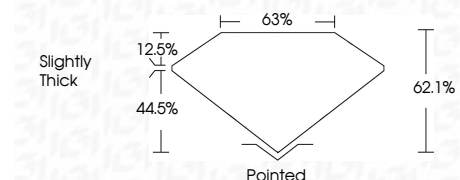
D E F G H I J Faint Very Light Light

CLARITY

FL IF VS<sup>1-2</sup> VS<sup>1-2</sup> SI<sup>1-2</sup> I<sup>1-3</sup>  
Flawless Internally Flawless Very Very Slightly Included Very Slightly Included Slightly Included Included



October 3, 2025  
IGI Report Number LG733547001  
Description LABORATORY GROWN DIAMOND  
Shape and Cutting Style CUT CORNERED RECTANGULAR MODIFIED BRILLIANT  
Measurements 8.92 X 5.75 X 3.57 MM  
GRADING RESULTS  
Carat Weight 1.61 CARAT  
Color Grade G  
Clarity Grade SI 1



ADDITIONAL GRADING INFORMATION

Polish EXCELLENT  
Symmetry EXCELLENT  
Fluorescence NONE  
Inscription(s) LG733547001  
Comments: This Laboratory Grown Diamond was created by Chemical Vapor Deposition (CVD) growth process.  
Type IIa



IGI



October 3, 2025  
IGI Report No LG733547001  
CUT CORNERED RECT. MODIFIED BRILLIANT  
8.92 X 5.75 X 3.57 MM  
Carat Weight 1.61 CARAT  
Color Grade G  
Clarity Grade SI 1  
Depth 62.1%  
Table 63%  
Girdle Slightly Thick  
Culet Pointed  
Polish EXCELLENT  
Symmetry EXCELLENT  
Fluorescence NONE  
Inscription(s) LG733547001

Comments: This Laboratory Grown Diamond was created by Chemical Vapor Deposition (CVD) growth process.  
Type IIa