



**ELECTRONIC COPY**

LG733553718  
Report verification at igi.org



September 13, 2025

IGI Report Number **LG733553718**

Description **LABORATORY GROWN DIAMOND**

Shape and Cutting Style **ROUND BRILLIANT**

Measurements **9.38 - 9.41 X 5.68 MM**

**GRADING RESULTS**

Carat Weight **3.05 CARATS**

Color Grade **E**

Clarity Grade **VVS 2**

Cut Grade **IDEAL**

September 13, 2025

IGI Report Number **LG733553718**

Description **LABORATORY GROWN DIAMOND**

Shape and Cutting Style **ROUND BRILLIANT**

Measurements **9.38 - 9.41 X 5.68 MM**

**GRADING RESULTS**

Carat Weight **3.05 CARATS**

Color Grade **E**

Clarity Grade **VVS 2**

Cut Grade **IDEAL**

**ADDITIONAL GRADING INFORMATION**

Polish **EXCELLENT**

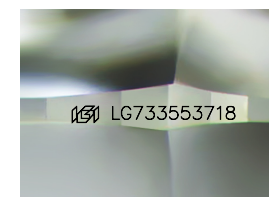
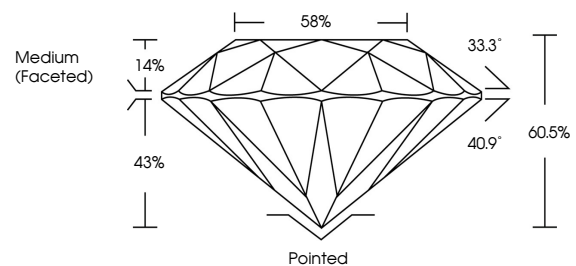
Symmetry **EXCELLENT**

Fluorescence **NONE**

Inscription(s) **IGI LG733553718**

Comments: This Laboratory Grown Diamond was created by Chemical Vapor Deposition (CVD) growth process. Type IIa

**PROPORTIONS**



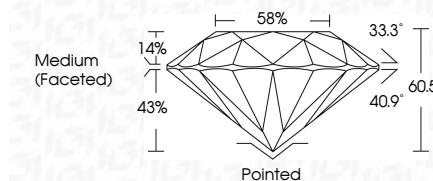
Sample Image Used

**COLOR**

D E F G H I J Faint Very Light Light

**CLARITY**

IF	VS <sup>1-2</sup>	VS <sup>1-2</sup>	SI <sup>1-2</sup>	I <sup>1-3</sup>
Internally Flawless	Very Very Slightly Included	Very Slightly Included	Slightly Included	Included



**ADDITIONAL GRADING INFORMATION**

Polish **EXCELLENT**

Symmetry **EXCELLENT**

Fluorescence **NONE**

Inscription(s) **IGI LG733553718**

Comments: This Laboratory Grown Diamond was created by Chemical Vapor Deposition (CVD) growth process. Type IIa



**IGI**



September 13, 2025	IGI Report No LG733553718	3.05 CARATS	E	Pointed	EXCELLENT	EXCELLENT	NONE	IGI LG733553718
ROUND BRILLIANT	9.38 - 9.41 X 5.68 MM	Carat Weight	VVS 2	Medium (Faceted)	IDEAL	EXCELLENT	NONE	IGI LG733553718
		Color Grade	IDEAL		60.5%			
		Clarity Grade	60.5%					
		Cut Grade	88%					
		Depth						
		Table						
		Girdle						
		Culet						
		Polish						
		Symmetry						
		Fluorescence						
		Inscription(s)						

Comments: This Laboratory Grown Diamond was created by Chemical Vapor Deposition (CVD) growth process. Type IIa